

WINDOW+ DOOR

ADVERTISEMENT

**WE ARE MORE
THAN JUST A
MANUFACTURING
COMPANY,
WE ARE
A PART OF
SOMETHING
BIGGER.**

Visit with our experts at GlassBuild in **BOOTH #7026**
or learn more at **QUANEX.COM**

Quanex

A Part of Something BiggerSM

WINDOW+ DOOR

SEE EVERYTHING

GLASSBUILD AMERICA RETURNS TO LAS VEGAS

OFFICIAL SHOW
PREVIEW:

PRODUCTS
EXHIBITORS
EVENT HIGHLIGHTS

OFFICIAL PUBLICATION

GlassBuild
AMERICA
THE GLASS, WINDOW & DOOR EXPO

GLASSBUILDAmerica.COM

CELEBRATING



FENESTRATION

In 1997 STÜRTZ MACHINERY INC. was founded in Solon, Ohio. Since then we've come a long way. Over the past quarter century, we've developed the first FLEXFAB, developed turnkey systems and introduced "Motion" and "Jet" control applications. We won the Crystal Achievement Award multiple times for innovative machinery in sawing and welding. We introduced the Linear Pro family featuring automated sawing and fabrication for the North American PVC window and door market. The move to our current location in Twinsburg, Ohio in 2022 has enabled us to not only double our size, but most importantly, it has allowed us to continue supporting the growth in the North American window market by increasing our staff in engineering, project management, manufacturing, and service.

Through the years we have developed a passion for innovation by having a vision and following through on it, even if it means pushing the boundaries. Our eyes are on the future of automation in North America as we provide solutions that best fit your manufacturing needs. Let us help you to realize your vision for a more automated production process.

p 330.405.0444
w www.sturtz.com



PASSION FOR INNOVATION



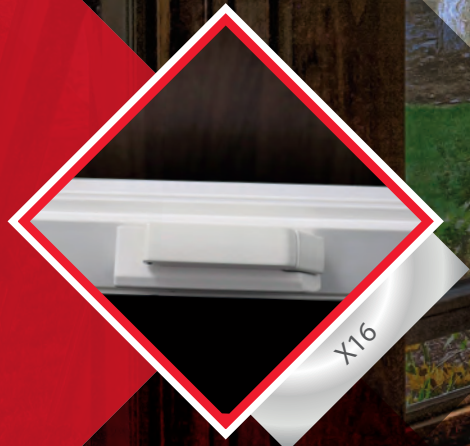
CONTACT

Stürtz Machinery Inc.
1624 Highland Rd.
Twinsburg, OH 44087

Tel 330.405.0444
Fax 330.405.0445
info@sturtz.com
www.sturtz.com



OP06



X16



OP08

Roto North America is pleased to showcase our
Roto X-DRIVE Casement Line



Excellence in
Window & Door
Hardware



Roto North America | rotonorthamerica.com

NT Tilt & Turn

Patio Fold

Patio Lift

Swing Door

Casement

Sliding Patio Door

Sash Locks

Residential fenestration coverage, from source to sale // windowanddoor.com // Vol. 30, No. 5 // September/October 2022

The GLASSBUILD America Issue

32. Show Preview

The inside scoop on GlassBuild America, the largest gathering in North America for all segments of the glass and fenestration industries. By Katy Devlin

40. See Everything: Product Preview

From window systems and hardware to automated IG and vinyl processing equipment, and all the pieces in between, this exclusive product section shows just a fraction of the products, services and supplies that will be on display in Las Vegas

70. The Exhibitor List

This year's event will host nearly 400 exhibiting companies, with more than 70 new suppliers added to the 2022 event. Also new this year, the World Millwork Alliance will co-locate with GlassBuild.



Insights

10. Observation Desk //

Everything Fenestration //

By Emily Kay Thompson

12. In the Trenches //

Insulating Glass Failures //

By Janice Yglesias

18. Decoded //

Fire Safety and Building Codes //

By Karl Fippinger

22. Eye on Fenestration

// Energy-efficient Windows Offer Reason for Optimism //

By Tom Herron

26. Business Matters //

Four Ways to Increase Profits //

By Chris Kammer

Intel

8. News //

In the Know

78. Market Data //

Outside View

From our Sponsors

28. Q&A with W+D //

VEKA Inc.

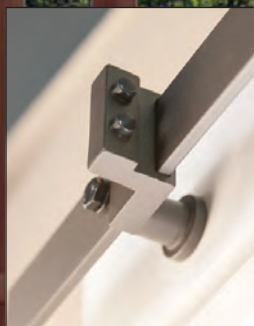
77. Ad Index

On the Cover: GlassBuild

America: The Glass, Window & Door Expo, returns to Las Vegas October 18-20.



We Bring Doors to Life!

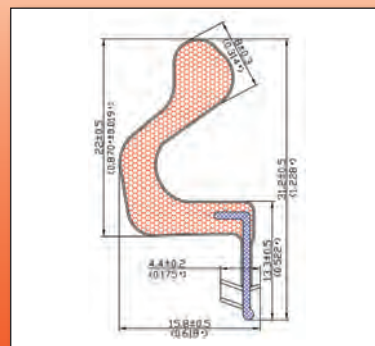
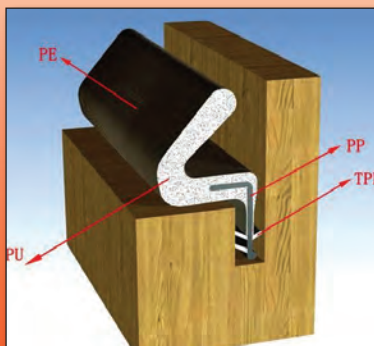
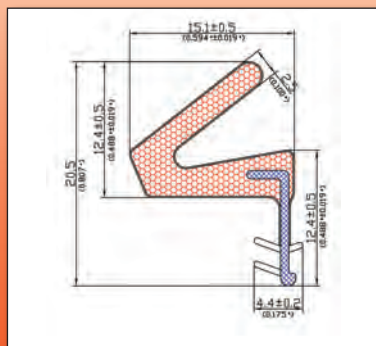


Hinge & Barn Door Hardware in Multiple Designs & Finishes

Major Product Categories:

Hinge, Plate, Track, Bag Kit, Barn Door Hardware, Weatherstrip & Accessories

High Quality Weatherstripping & Corner Pad for Fire Rated Doors



**UL Category H & J Certified
AAMA Class A Certified**



See us at the WMA
Tradeshow, booth 3315.

895 S. Rockefeller Ave. #104, Ontario, California 91761

Tel: (909) 786-0629 Fax: (909) 605-1806

www.VantagePointIndustries.com

Online

HIGHLIGHTS FROM
WINDOWANDDOOR.COM

➔ Follow us on social media



twitter.com/
windowdoormag



facebook.com/
windowdoormag



instagram.com/
windowdoormag

Be sure to subscribe to our Window + Door Weekly newsletter from the homepage to get exclusive and curated content delivered to your inbox every Wednesday.

➔ GlassBuildAmerica.com Exclusives

Window + Door is the official publication of GlassBuild America, providing exclusive access to every aspect of the event. Editorial staff works directly with events and digital media to ensure the GlassBuild website has every piece of information attendees and exhibitors need to make the most of their time in Las Vegas. Go to www.GlassBuildAmerica.com to find:

- Extended product information, including videos and links to exhibitors.
- Exhibitor profiles, including contact information and company highlights.
- Information on educational presentations held throughout the duration of the show.
- A new portal with curated content just for residential fenestration professionals.

➔ Inside GlassBuild // 2022 Blog Series Highlights

Market influencers share insights on why they attend GlassBuild. See the entire series at glassbuildamerica.com/inside-glassbuild.



Gather the Whole 'Family'

By Samantha Hudeck



Countdown to GlassBuild

By Elliott Jones



Get Inspired, Live and In-person

By Casey Anderson

“If you're looking for the next BIG idea, GlassBuild is the place to find it. The trade show floor is where conversations evolve organically. GlassBuild is the place to get inspired, have collaborative in-person conversations, and arrive at (hopefully!) several decisions on how to grow.”

Window + Door™ (ISSN 1525-1195), Volume 30, Number 5. This periodical is published six times a year, January/February, March/April, May/June, July/August, September/October and November/December by the National Glass Association, 344 Maple Ave. West, Unit 272, Vienna, VA 22180. There is no charge for subscriptions to qualified requestors in the U.S. and Canada. All other subscriptions will be charged \$49.95 in the U.S. and Canada, and \$79.95 in all other countries. Periodicals postage paid at Vienna, VA, and at additional mailing offices. POSTMASTER: Send changes of address to Window + Door, PO Box 419, Congers NY 10920. Canada Post: Publications Mail Agreement #40612608. Canada Returns to be sent to Bleuchip International PO Box 25542, London, ON N6C 6B2, Canada. For all subscription inquiries, please call 1-800-765-7514. ©2022 National Glass Association. All rights reserved. Printed in the U.S.A.

WINDOW+DOOR

Produced by



344 Maple Ave. West, Unit 272
Vienna, VA 22180
P: 703/442-4890

Editorial

Emily Kay Thompson // Publisher

Laurie Cowin // Editor

Norah Dick // Associate Editor

Rachel Vitello // Assistant Editor & Researcher

Cory Thacker // Creative Lead

Bethany Stough // Senior Manager, Digital Media

Wendy Vardaman // Web Editor

Beth Moorman // Production Director

Jo Ann Binz // Circulation Manager

Advertising

Executive Publishing // 410/893-8003 // Account Managers:

Chris Hodges // chodges@executivepublishing.com // 410/459-8619

Mike Gribbin // mgribbin@executivepublishing.com // 410/459-0158

Tim O'Connell // toconnell@executivepublishing.com // 443/717-1425

Board of Directors (2021-22)

Guy Selinske // Chair // American Glass & Mirror Inc.

Brian Hale // Chair-Elect // Hale Glass Inc.

Doug Schilling // Treasurer // Schilling Inc.

Cathie Saroka // Immediate Past Chair // Goldray Glass

Darijo Babic // Guardian Glass

Denise Baker // Spring Glass & Mirror

Ron Crowl // FeneTech Inc.

Tim Kelley // TriStar Glass Inc.

Silas Koonse // Koonse Glass Co.

Courtney Little // Ace Glass

Rick Locke // Montana Sash & Door

Jodi Martinez // AllStar Glass Co. Inc.

Jim Stathopoulos // Ajay Glass Co.

Nicole Harris // President & CEO // National Glass Association

If You are Stuck Being Dependent on Imports,
We Offer our Condolences

16,000 Miles from your source, Long Supply Chain, Long Term
Contracts, Managing Supply Chain Logistics,

TARIFF FREE

If You Would Like to Enjoy the Benefits of
American Made Hardware
We Offer our Services

**Want to Visit one of the Only
Hardware Companies In the USA?
We will Pay your Way to Visit
Our Domestic Factory!**

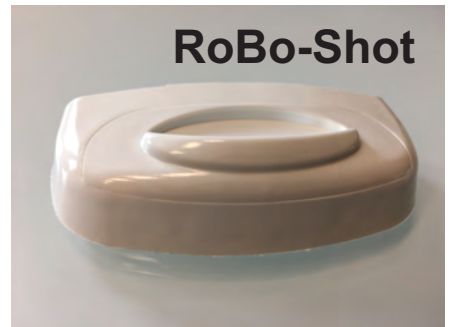


Reduced Inventory
World Class Prices
World Class Quality
Inventory Management
Programs



In House:
Design
Tooling

Why Buy from
Any Other
Country?



LAWRENCE
INDUSTRIES, INC.
www.lawrenceindustriesinc.com

*From Concept to Delivery
Faster than Anyone on the Planet!*



100% Made in USA



See us at GlassBuild America, booth 9018.



STAY IN THE KNOW // Subscribe to **Window + Door Weekly**, our weekly newsletter that keeps you informed with everything fenestration every Wednesday

Companies expand capacity

YKK AP America Inc. will invest up to \$125 million in an expansion that will include a new residential window and door manufacturing facility and additional machinery and equipment in Macon, Georgia. The facility will serve as a model plant for the company's future North American manufacturing plants, featuring advanced sustainable manufacturing and enhanced work environments for employees, say officials, and will create over 100 new jobs. The company will break ground on the facility in October, and plans for the new facility to be operational by first quarter of 2024.

PGT Innovations, which also recently expanded manufacturing operations, hosted the grand opening of its NewSouth Window Solutions showroom in Duluth, Georgia. The showroom provides homeowners the opportunity to see, feel and operate full-sized windows and doors at the showroom, work directly with a NewSouth Window representative throughout the entire process, have their products installed by the team, and be protected with a lifetime warranty. The 4,500-square-foot showroom will feature NewSouth window and door products, including single hung, double hung, horizontal slider and picture windows, as well as sliding glass patio doors and entry doors.

Mergers, acquisitions and partnerships continue

Andersen Corp. and Ubiquitous Energy entered into an agreement to jointly develop energy-generating window and door products. The companies

are working together to bring products to market that will innovate solar generation for residential and light commercial buildings and contribute to a healthier planet, say officials. The products will leverage Ubiquitous Energy's UE Power technology, a transparent photovoltaic glass coating that harnesses solar power to generate electricity, while looking similar to traditional windows.

Assa Abloy completed another acquisition, this time of security supervision software provider Alcea. Based in France, the company was established in 1995 and has around 120 employees. The acquisition is subject to regulatory approval and customary closing conditions and is expected to close during the third quarter of this year.

ODL Inc. also acquired another company, Robover Inc., an insulating glass manufacturer based in Quebec, Canada. All Robover employees and locations are being retained by ODL. The acquisition is part of a strategy to enhance product lines and expand the company's reach in Canada and beyond, says Anne Tardif, president of Robover.

Quanex's Woodcraft Industries brand will now be known as Quanex Custom Components. The decision comes as a way to bring a united, joined focus to Woodcraft, its subsidiary companies and the rest of the broader Quanex family of brands, according to a statement by the company. Since Quanex acquired Woodcraft in 2015, the brand has broadened its scope into additional materials and service offerings. The name change enables the brand to operate as a single entity that provides a broad range of solutions to customers in a variety of markets.

IN THE NEWS:

Month in Review

Forbes' America's Best-in-State Employers list ranked **PGT Innovations** No. 1 in the engineering and manufacturing category. To compile the list, a survey was conducted among 70,000 U.S. employees across 25 industry sectors. The survey took into consideration every aspect of an employee's experience, including working conditions, salary, potential for growth, and diversity in the workplace.

Rehau also received recognition for its company culture. Seven countries operating within Rehau's Americas region, including Argentina, Brazil, Canada, Chile, Mexico, Colombia and the United States, individually achieved Great Place to Work Certification. This recognition is based on what current employees have to say about their workplace experience in the Great Place to Work global employee survey platform.

All Weather Windows was selected as one of the "Best Places to Work" by the North Bay Business Journal, marking the third consecutive year the company has made the list. The award recognizes outstanding organizations for their support, respect and commitment to their employees and highlights best practices.

Modern Distribution Management named **Magid Glove & Safety** to its 2022 Top Distributors list for the safety segment. The annual list ranks the Top 150 North American industrial, construction and commercial product distribution companies.

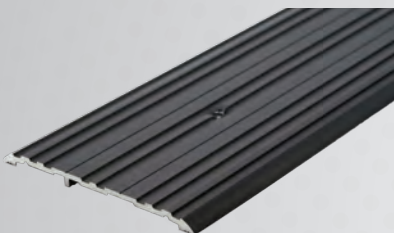
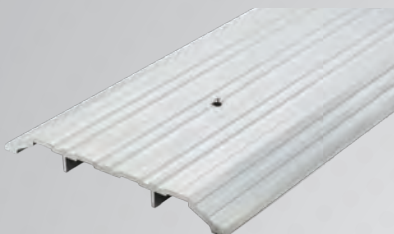


Don't Miss a Headline
Follow @windowdoormag on Twitter for industry updates

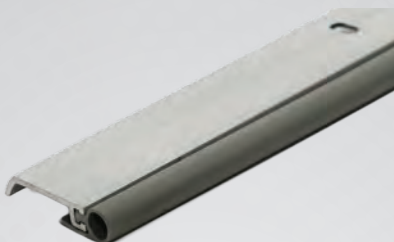
MERIT | ALUMINUM PRODUCTS INC.

EXTRUDER DIRECT PRICING

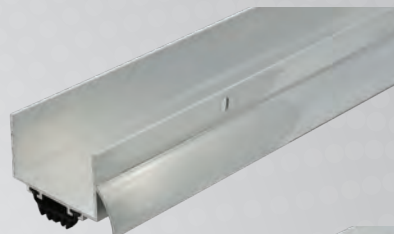
THRESHOLDS *Multi-Family ADA & Residential*



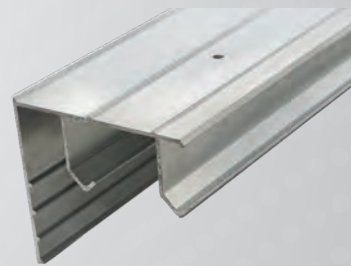
WEATHERSTRIPS *& Perimeter Gasketing*



SWEEPS *& Door Bottoms*



BYPASS TRACKS



- **EXTRUDER DIRECT PRICING**
- **IN STOCK AND READY TO SHIP**
- **CUSTOM FAB AVAILABLE**
- **HIGHEST QUALITY FINISHING**

SALES REPS NEEDED IN ALL TERRITORIES



2420 Railroad St.
Corona, CA 92880
(951) 735-1770
meritaluminumproducts.com

Everything Fenestration



By Emily Kay Thompson
PUBLISHER

It may have *glass* in its name, but make no mistake that GlassBuild America: The Glass, Window & Door Expo is the biggest event in North America for anyone in the business of residential fenestration. Walking the floor is like a live who's who for our industry. Companies in the top echelon of our annual Top Manufacturers Report are all regular attendees. Why?

There's a lot to look forward to—this entire issue highlights what we've been planning for this year's GlassBuild in Las Vegas. Here are some of the plans I am excited to see come to fruition.

What: Women in Glass + Fenestration **When: Wednesday, 10 a.m., Main Stage**

How can we encourage more women to join our trades and support those already working within them? This is a huge piece of the diversity, equity and inclusion conversations happening in different pockets of the industry. The Women in Glass + Fenestration Event, being held for the first time at GlassBuild America 2022 in Las Vegas, will bring women together to discuss strategies for encouraging the next generation of women to join our industry.

All are encouraged to partake in this presentation and discussion on how to raise awareness about careers in our industry. Opening the conversation are Deb Callahan, National Fenestration Rating Council; Barbara Kotsos, Giroux

Glass; and Alicia Hamilton, National Glass Association. I should also mention: in addition to great discourse and networking, there will be snacks.

What: Mental Health and Suicide Prevention **When: Wednesday, 10 a.m., Main Stage**

In 2020, the Centers for Disease Control and Prevention found that men working in construction have one of the highest suicide rates compared to other industries, averaging four times higher than the general population.

Presented by John Hewitt, "We Mind and Kelly Matters;" Steve Dillon, VEKA North America; Dustin Anderson, The Alone Effect; and the American Foundation for Suicide Prevention, this timely and poignant session puts mental health advocates in the glass and fenestration industry on the stage to talk about their efforts to raise awareness, increase suicide prevention and change the stigma surrounding mental illness.

What: Familiar Faces sans computer screens **When: Tuesday through Thursday, Las Vegas**

"GlassBuild is a lot like a family reunion for us. No, not the kind you dread and think of every excuse to avoid. But the reunion you look forward to so much that you count down the days until you're there," writes Samantha Hudeck, FeneTech, a 2020 Company, in her Inside Perspectives blog on GlassBuildAmerica.com.

I'm with you, Samantha. I look forward to conversation, laughs, mingling along The Strip at various events hosted by exhibitors after the show, meeting with industry friends and making new ones. Find me in the Industry Pavilion, booth 1172, along with most of the staff of Window + Door, GlassBuild, the National Glass Association, and sister publication Glass Magazine. Our friends from the Fenestration and Glazing Industry Alliance will also be hosting in the Industry Pavilion for the duration of the show.

Can't wait to see you there. ■

"...make no mistake that GlassBuild America: The Glass, Window & Door Expo, is the biggest event in North America for anyone in the business of residential fenestration."

Attention Window Manufacturers!

Put Your Window Business into Overdrive with AllView

Why Every Window Fabricator Should Be Fabricating AllView Shutters

- **Tap Into a New Revenue Source**
Replace the window AND the window coverings!
- **Beat All Imports on Price**
With low-cost shutter components and lighting fast production times.
- **Increase Your Profits**
One of the most profitable hard window coverings you can build.
- **Install Shutters in One Week**
Fabrication is quick and easy.
- **Produce a Poly Shutter with a Wood-like Finish**
Thanks to WoodTex™ finish, shutters look and feel like painted wood.
- **Make Money Right Away**
AllView gives you a one-month return on investment once you start fabricating and selling.

For more information, call an authorized AllView representative at (323) 717-4072

ALLVIEW
Polyresin Shutters



Learn More About Why You Should Be Fabricating Allview Shutters

www.uspolymersinc.com/all-view

jdobel@uspolymersinc.com ▪ (323) 717-4072

Insulating Glass Failures

Find the root cause and solutions in continuing education



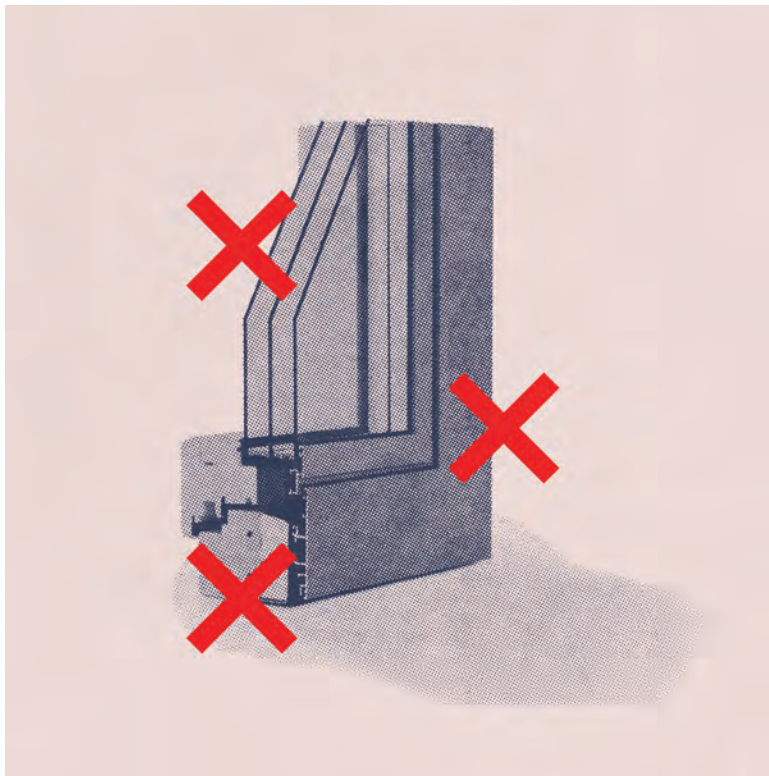
**By Janice
Yglesias**

Insulating glass is used in over 90 percent of the windows and glazed doors sold across North America, according to the Fenestration and Glazing Industry Alliance's market study. Though IG fabrication is a well-known process, it is sensitive to variations that can lead to early failure in use. Although rare, such failures can be highly visible and may require window replacement. These failures and the ensuing corrections are potentially detrimental to the reputation of the fabricator.

One of the most obvious indications of failure of an installed IG unit in a window or door is permanent fogging—visual obstruction due to a

milky-white film on the interpane surfaces of the glass—caused by hermetic seal failure. Fogging can also be due to:

- Film deposits left on insufficiently washed glass, such as residue of cleaning solution, adhesive or oils from excessive handling,
- The accumulation of the products of chemical interaction between volatiles released from components, such as spacers, sealants, muntin bars or grilles, or desiccant or paints, or
- Component incompatibility, such as the use of glazing sealant versus IG sealant.



One of the most obvious indications of failure of an installed IG unit in a window or door is permanent fogging—visual obstruction due to a milky-white film on the interpane surfaces of the glass



We bring in **prestige** to **Your** interiors

The European leader in the window and door industry is available on the American market. We manufacture, deliver, and offer long-term warranty.



innovative
design



45 export markets
around the world



accommodating
solutions



the biggest transport
fleet in Europe



Discover our products at

www.ekookna.us

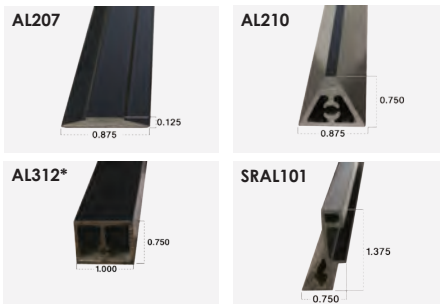


FRONTLINE® BLDG. PRODUCTS INC.

COMMERCIAL WINDOW GRILLES



FrontLine® Bldg. Products, Inc. has been exceeding expectations in the commercial and residential grille markets for over 40 years. Our attention to detail and our closed halving joint ("dado") enable us to provide a beautiful, finished look while adding value and savings in your shop or on the jobsite. Our experience, expertise, and engineering support make us the ideal partner for your job. Whether it's our ever-expanding range of SDL options or our perimeter options, we have the right application for your project. Our pattern capabilities include diamonds, radius, and even simulated vents.



View all profiles **Connect with Us**



www.frontlinebldg.com
salesmedford@frontlinebldg.com
 1-800-223-4792
[f](#) [in](#) [v](#)

Visit us in the co-located Millwork Alliance
Convention Hall in booth #4295



See us at the WMA Tradeshow, booth 3315.

➔ In the Trenches

Catch up with FGIA at GlassBuild, Oct. 18-20 in Las Vegas. Meet with FGIA staff at the Industry Pavilion in booth #1172 and sit in on FGIA's three educational sessions on GlassBuild's Main Stage. Go to GlassBuildAmerica.com to see the schedule.

Another issue is that seal failure can cause loss of inert gas infill, which degrades thermal performance. The common causes of seal and/or spacer failure are fabrication-related. These issues include:

- Cracked glass due to excessive edge pressure or poor edge quality from cutting,
- Air pockets in the sealant bead,
- Poor corner fill,
- Poor spacer/glass alignment,
- Desiccant that has been left exposed too long before sealing,
- Poor mix of sealant, and
- Damaged low-E coating.

To help prevent such problems, it is important that IG fabricators and shop floor team leaders understand what material or fabrication process steps tend to harbor the root causes of degradation. They should also understand proper selection and use of compatible sealants, desiccants, spacers, in-fill gases, glass coatings and other components, as well as the elements of testing, packaging, shipping and glazing of IG units.

The FGIA Insulating Glass Fabricator Workshop offers a hands-on experience for team members associated with the assembly of IG units and the fenestration products that utilize them. The workshop also provides opportunities for career enhancement as well as improvements in product quality and long-term customer satisfaction.

IG Fabricators Workshop

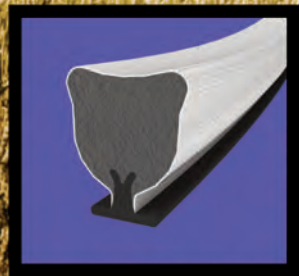
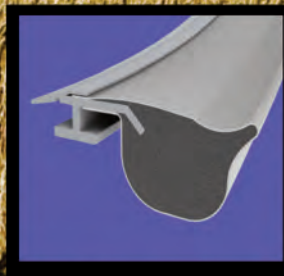
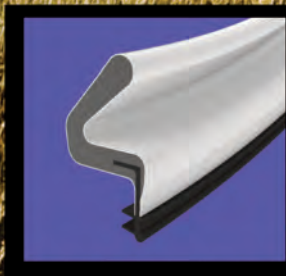
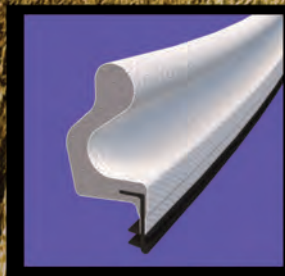
Since its launch in 2016, the FGIA Insulating Glass Fabricator Workshop has addressed best



FenSeal

The Weather Stops Here

High Performance
Door and Window Seals



EXTENSIVE CATALOGUE OF URETHANE FOAM SEALS

AAMA Certified

In Stock with a 3-day lead time

Charlotte, NC - Dallas, TX - Sumner, WA



www.FenSeal.com - info@fenseal.com - 610-403-9838

CALDWELL

*We create access to the world,
while securing what matters most.*



**Visit GlassBuild Booth #6046
to See Our Industry Leading
Innovation & Safety Developments**

INNOVATION

Across all Fenestration Hardware



**MAGNUM®
MONUMENTAL Hinges**



**Side Lock
ROLLER TILT®**



**ENGUITY™ & OMNI Auto DRIVE™
Window & Door Automation**



**MAGNUM®
59-5012**



**OMNI DRIVE™ Handle Options:
Standard, Rainbow & Extended**

& SAFETY



All Innovation Products Shown are Patented or Patent Pending

Caldwell is serving customers in 70 countries.
See what solutions we can provide for you, contact Caldwell today.

P: 888.347.7771 • F: 585.352.3729

www.CaldwellMfgCo.com

**Follow us on LinkedIn for more
Product Innovations & Company Information**

➔ In the Trenches

Since its launch in 2016, the FGIA Insulating Glass Fabricator Workshop has addressed best practices for the most important aspects of fabricating and testing IG units. Over six years, it has hosted hundreds of skilled practitioners of our industry.

practices for the most important aspects of fabricating and testing IG units. Over six years, it has hosted hundreds of skilled practitioners of our industry.

Through a mix of classroom education along with a primary focus on hands-on demonstrations, the workshop showcases best practices for the typical IG fabrication stages, as well as an opportunity to witness the physical testing per ASTM E2190 that goes into certification of IG units as required by NFRC standards, building codes and the ENERGY STAR program.

The next in-person workshop will be held Nov. 1-3, 2022, at the Intertek Testing facility in Plano, Texas, near Dallas. Among the topics covered are:

- Glass Cutting and Washing
- Spacer and IG Fabrication
- Sealants, Hot Melt Sealant, Sealant Adhesion and Butterfly Test
- Volatile Fog
- Gas Filling and Measurement
- Frost Point
- Desiccants and Desiccant Matrix
- Forensic Investigation of IGU Failures

For those unable to attend in-person, FGIA also offers a video series option. Developed in 2021, this series offers a condensed version of the workshop in 20- to 30-minute segments.

Registration for the 2022 in-person workshop is now open. Find out more at FGIAonline.org/IGworkshop. Contact education@fgiaonline.org for more information. ■

Janice Yglesias is the executive director of the Fenestration & Glazing Industry Alliance, overseeing the full organization. She joined the association in 1999 and can be reached at jyglesias@FGIAonline.org.

HAECO



FAMATEC FRIENDLY

Average Cost of Work Loss
Injuries in 2020
\$44,000*

Average Installed Cost of the
FAMATEC FRIENDLY
\$44,000



PRO-GLAZE 8400

Comparable in price to a
hand-assist

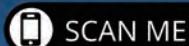


PRO-SET 3400

Another safety & quality
solution from HAECO



(800) 352-3522
www.haeco.us



We didn't make it to GlassBuild, so we are passing the cost savings on with a **10% discount** on all orders placed before the end of 2022.



Fire Safety and Building Codes

Fire-resistant windows can help mitigate the destruction associated with residential fires



**By Karl
Fippinger**

When it comes to building safety, preventing and mitigating fire hazards are among the top priorities for fenestration manufacturers and installers. Fire safety is increasingly important, with the National Interagency Fire Center reporting an overall increase in both the number of fires and acres burned since these statistics were first recorded in 1983.

In addition to wildland fires, high-profile building fires in the Bronx, New York and Philadelphia have brought building fire safety into the spotlight. According to the National Fire Protection Association, total fire damage in the U.S. for 2020 was estimated at approximately \$21 billion.

While many believe that wildland fires are a western states issue, in truth, more than 46 million residences located in 70,000 communities

throughout the U.S. are at risk from wildland fire. Many of these communities lie in zones of transition between unoccupied land and human development: a highly flammable terrain known as Wildland-Urban Interface that is growing by 2 million acres per year and poses significant health, environmental and property damage risks.

With elected officials seeking to implement actionable change to both reduce carbon footprint and protect their constituents, building codes lay the foundation for long-term sustainability and resiliency. Fenestration professionals who understand, implement and lobby for the latest and safest building codes can have a significant positive impact on the resiliency of buildings and safety of residents.



WINDOW TECHNOLOGY
DOOR TECHNOLOGY
AUTOMATIC ENTRANCE SYSTEMS
BUILDING MANAGEMENT SYSTEMS

*Innovative casement window hardware
Unique installation, Patent pending.*



FENIX

Be part of the **evolution!**

Ferco Architectural Hardware Inc.

T 1 800 927 1097

ferco@ferco.ca

T 1 888 454 0161

ferco.ca | g-u.com

|||||
Securing technology for you



Building codes can mitigate damage

Residential fires pose a real danger for homes across the country. The NFPA estimates that residential fires accounted for \$12.1 billion in damages in 2020. Furthermore, a recent NFPA report found that the U.S. saw approximately 346,800 home structure fires a year. For residential homes, building

Fire-resistant windows can play a huge role in mitigating the severity and destruction associated with a residential fire.

codes such as the International Residential Code provide minimum standards for egress doors and windows to ensure occupants have a way out in the event of an emergency.

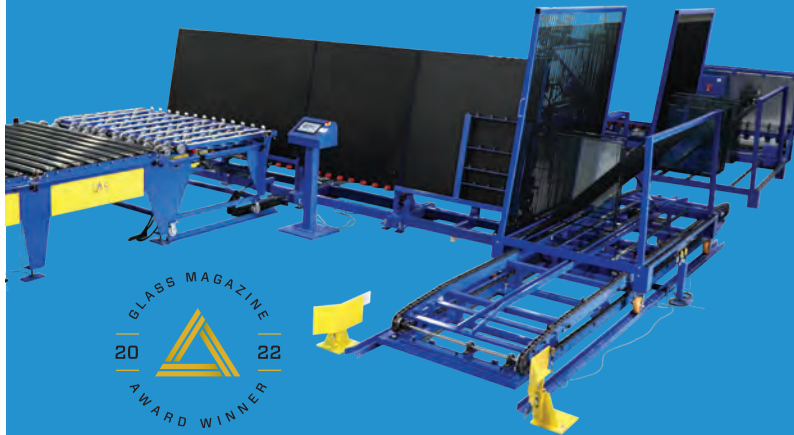
Building codes are at the core of community resilience and disaster mitigation because they ensure that fenestration and other critical building components are constructed based on the latest research and data on all hazards.

From requirements on sizing and materials, these building codes ensure proper safety precautions are used in homes across the country. For example, high-performance, fire-rated windows can withstand temperatures in excess of 1,600 F, well above the average temperature of a house fire. Fire-resistant windows can play a huge role in mitigating the severity and destruction associated with a residential fire.

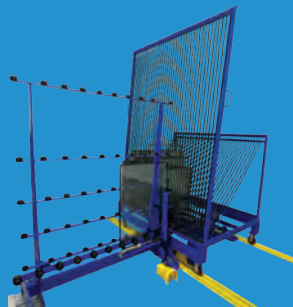
Proactive measures and using the latest editions of codes and standards can make a big difference for the safety of residents in the event of a fire. To mitigate future damage, fenestration professionals and industry leaders can use and encourage federal, state and local governments to adopt the most up-to-date building codes like the IRC and IWUIC. ■

Karl Fippinger, CEM, PMP, is vice president, fire and disaster mitigation for the International Code Council's Government Relations Department, where he leads the Code Council's national fire service and emergency management activities. Fippinger brings more than 30 years of domain experience, having served as an assistant fire chief with the Occoquan-Woodbridge-Lorton Volunteer Fire Department in Prince William County, Virginia, and as an adjunct instructor with the Fairfax County Fire and Rescue Department in Fairfax, Virginia.

Reduce Labor *and* Rejects



Increase efficiency *and* reduce damage *and* Improve safety with fully-automated and innovation-award-winning AutoRack1™ and semi-automated RackAssist. Details and videos at iasmachinery.com/rack.



Make More With Less
GlassBuild Booth 4152

Ryan McHugh 330.954.3070 ryan@iasmachinery.com

Peace of mind solutions to preserve your windows

**Process & protective films, technical
tapes and specialty machines**
adapted to your needs:

- whatever the surface: glass, PVC, painted aluminum...
- whatever the finish: from glossy to rough surfaces
- with unique advantages for you and your customers



**Visit us at Glassbuild 2022, booth 2052
and discover more about our complete solutions!**



www.novacel-protective.com





Energy-efficient Windows Offer Reason for Optimism

Post-pandemic, consumers are willing to wait for products they want



By Tom Herron

Putting more energy-efficient windows, doors and skylights into service depends on functioning, resilient global supply chains. While fenestration product manufacturers still face challenges meeting demand, post-pandemic consumer attitudes may offer some relief.

According to Morgan Stanley, the largest culprit to emerge from the pandemic and create supply chain delays was the unexpected and unprecedented surge in demand for physical goods. This resulted from record stimulus programs and a sharp shift in spending from services to consumer durables and has been exacerbated by the scarcity of labor to effectively manage, process and unload U.S. imports.

Consequently, consumers who want energy-efficient windows still face extended lead times, and the situation is not likely to normalize until late 2023.

One survey of homebuilders cites long wait times for windows and doors as the No. 1 cause of delayed construction projects. Furthermore, Consumer Reports adds that homeowners who want to replace their windows in 2022 should expect it to take 12 to 20 weeks from purchase to installation.

Rising demand for energy-efficient windows

Amid supply chain disruptions, global demand for energy-efficient residential windows will increase.

The market is projected to grow from \$13.1 billion in 2021 to \$18.3 billion by 2026 at a compound annual growth rate of 7 percent, according to research by [researchandmarkets.com](https://www.researchandmarkets.com).

New housing starts will drive much of this demand. The National Association of Home Builders says total housing starts for 2021 were 1.6 million, a 15.6 percent gain over the 1.38 million total from 2020. Moreover, the U.S. Census Bureau says privately owned housing starts in April 2022 were at a seasonally adjusted annual rate of 1.7 million, which is 14 percent above the April 2021 rate of 1.5 million.

Although supply chain disruptions will continue, the growth in demand for energy-efficient residential windows, combined with new consumer attitudes, offer a reason for fenestration product manufacturers to be optimistic.

Responsible choices over expedience

A recent survey by Engine Insights that explored the repercussions of supply chain disruptions shows consumers are understanding, with half of those who experienced a delay expressing a willingness to wait for the exact item they want. In fact, 41 percent are willing to wait up to three months.

Post-pandemic consumers want to make more environmentally responsible choices and view themselves as the catalyst for change, according



LOADING/UNLOADING STATION



SAW/MACHINING CENTER INTEGRATION



MANUAL QUICK ACCES LOCATION

Discover the fehr difference

— Get custom warehousing solutions tailor-made for the window and doors industry. We are the only company specializing solely in manufacturing warehouse solutions. Fehr makes it easy for you to envision what's possible with innovative logistics. Plus, with perfectly coordinated handling, ergonomics, and efficiency planned in, you can optimize your warehouse system even more.

Fehr Warehouse Solutions Inc.

4801 Chastain Avenue, Suite 140, Charlotte, NC 28217

T +1-704-666-8448, info@fehr-usa.com, www.fehr-usa.com



WHEN IT COMES TO BRIDGING THE GAPS IN YOUR ASSEMBLY LINE, YOU CAN RELY ON WAKEFIELD EQUIPMENT.

We fix problem spots in the assembly lines of big and small companies in the fenestration industry. Period.

We do it with smartly designed products that fit seamlessly into your existing assembly line.

We do it with a certain resolve to make assembly processes run smoother. Which is pretty smart, too.



SPECIALIZING IN...VERTICAL & HORIZONTAL STRETCH WRAP MACHINES • UP-CUT, CHOP & V-NOTCH SAWS • COPY ROUTERS • PUNCH PRESSES • CARTCADDY • CUSTOM BUILT EQUIPMENT • WINDOW & DOOR ASSEMBLY LINES • SCREEN TABLES • LINEAL POSITIONERS & SAW STOPS • GLASS & MATERIAL HANDLING EQUIPMENT...AND MUCH MORE!

See us at GlassBuild America, booth 3150.

➔ Eye on Fenestration

to research the National Fenestration Rating Council conducted.

Accordingly, these consumers also view healthy homes and buildings as a necessity, and they are especially concerned about maintaining good indoor air quality. Moreover, 85 percent think about energy efficiency and sustainability more than they did before the pandemic, and 73 percent plan to change their consumption habits to reduce their environmental impact.

The same research shows 57 percent of companies have accelerated their energy efficiency and sustainability plans, and 33 percent of them say facilitating employee health and well-being will take precedence for them throughout 2022.

Better days ahead

The U.S. Chamber of Commerce says that businesses should be diligent in their communications to manage consumers' expectations. Transparency goes a long way toward building relationships, and consumers are more likely to accept delays if they know about them ahead of time.

Similarly, consumers can manage the variables within their control and reduce the uncertainty involved with acquiring energy-efficient windows by checking a manufacturer's website for current estimated lead times prior to making a purchase.

Finally, we would all do well to remember that supply chain upheavals are not exclusive to the fenestration industry and remind ourselves that these unprecedented disruptions, although challenging at the moment, are likely transitory. ■

Tom Herron is senior director, business development and special projects, at the National Fenestration Rating Council.



No matter the **WINDOW**
we have the right **WRAP**®

WindowWrap®—the system to stick with.

WindowWrap® is a family of self-adhesive, self-sealing waterproofing tapes that bring quality and value to any building application. These advanced flashing solutions are the ultimate defenders against wind, water, insect and sound penetration. **The WindowWrap® system of products deliver maximum protection for door and window weather barriers.**



WindowWrap® Flashing Solutions

- Straight flash options
- Flex options for sill pan and curved shapes
- Low-temperature installations
- Commercial or residential

mfm® BUILDING PRODUCTS CORP.

Visit mfmbp.com for a free sample or call 800.882.7663 today.





4 Ways to Increase Profits

Attending GlassBuild America can give companies a competitive edge



**By Chris
Kammer**

With GlassBuild America fast approaching, it's time to think about the benefits of attending. According to multiple sources, there are at least four ways attending tradeshow can help grow your company's profits.

1. Address changing customer tastes

Manufacturers can address changing consumer tastes by adding and assessing new product lines. More than 450 companies are expected to exhibit in Las Vegas from Oct. 18-20, providing attendees the opportunity to take a better look at new product lines (glass, windows, doors, etc.), participate in hands-on demonstrations, ask in-depth questions and locate new innovations. One of these new products has the potential to enable a company's growth into the future and can even shape the future of the company and the industry.

2. Invest in capital equipment

With more than 100,000 square feet of show floor space dedicated to equipment for glass, window and door fabrication, exhibitors can physically touch and see the equipment. Companies looking to make an investment can make a more informed buying decision by attending the event. Some exhibitors also offer show specials and deals.

3. Build supply chain relationships

The supply chain has been beaten up over the last two years. Exhibitors and attendees have the opportunity to strengthen relationships through face-to-face interaction on the show floor. As Eric Thompson of Quanex Building Products wrote in

The Talk on windowanddoor.com, "The Value of a Full-Service Supplier," it is important to remember how any substitutions may be met by your customers and "elevate" your business. Doing business in person helps companies make better decisions.

4. Get educated on the tech and the people to grow your business

Finally, GlassBuild is a prime opportunity for all levels of staff to learn about new trends and technology, an important factor in moving toward growth and a future dominated by technology and innovation. Each day on the show floor offers networking and peer-to-peer educational opportunities on the Main Stage, as well as demonstrations from the top vendors in the industry. Take advantage of in-person discussions to educate yourself on innovative solutions because these solutions are driving our industry forward. Do not be left behind!

Deepen relationships. Strengthen your supply chain. Learn about new technology. Build a company that can take advantage of future opportunities. Meet me and most of your suppliers at GlassBuild to help grow your company's potential and profits. ■

Chris Kammer is the marketing lead for A+W Software North America.

Speed up your production.



In the factory.

NovaFlex Qwik-Set Glazing Sealant is a two-component, neutral cure silicone that rapidly builds adhesive and elastomeric strength while bedding or glazing glass, allowing you to move assemblies within minutes without silicone transfer or glass shifting.

- Rapid cure means high unit throughput
- Adjustable ratio dials in your snap time
- Low pumping viscosity is easy on production equipment

In the field.

NovaFlex Qwik-Set Portable Adhesive & Glazing Sealant delivers high initial green strength wherever you need it. It is designed for hand glazing, field glazing, and field installations when glazing tables aren't an option. Available in a convenient, fixed 2:1 ratio dual cartridge, it can be easily applied with a portable pneumatic or battery powered gun.

Want to see it in your plant?

Now you can demo NovaFlex Qwik-Set Sealant in your plant with NO DISRUPTION to your production line. To schedule, go to novagard.com/qwiksetdemo.

Visit us at [GlassBuild America, booth 7076](#).

NOVAGARD®
Performance Silicones | Woman Owned

Next Gen Initiatives

Cultivating the next generation of workers through community support and industry education



By Emily Kay Thompson
PUBLISHER

Last we spoke with VEKA in spring of this year, we had an engaging conversation about how corporate social responsibility matters to the industry. Here, we check back in with Steve Dillon, corporate marketing director, and Kevin Seiling, vice president, engineering, to learn about the company's latest initiatives and how supporting mental health awareness also inspired a new focus on supporting the next generation through training and education.

Window + Door: Tell us about VEKA's recent CSR activities.

Steve Dillon: This year, the VEKA Group is creating greater awareness for the crucial topic of mental health awareness, specifically suicide prevention. We are sponsoring The Loneliest Road, a charity cycling event covering both Europe and North America.

Inspiration for this effort began with the British charity "We Mind and Kelly Matters." Founder John Hewitt, a former VEKA fabrication partner,

lost his daughter Kelly to suicide in 2018. With his wife Rachel and daughter Amy, he founded the organization to help sufferers and their loved ones in the fight against mental illness.

The Loneliest Road tour began in Europe on Sept. 10, World Suicide Prevention Day. The American tour starts on Sept. 24, in New Jersey, and follows US Route 50, aptly designated as "The Loneliest Road in America." The ride ends on World Mental Health Day, Oct. 10, at the Golden Gate Bridge in San Francisco. Kelly's Heroes' goal for the Loneliest Road tour is to bike 49,720 miles, the equivalent of biking around the world twice. This journey symbolizes that, when it comes to mental health, if you want an honest answer, you should always ask twice to see if someone is okay.

As the Kelly's Heroes Team treks across the U.S., VEKA employees will participate in a virtual journey, competing with coworkers at other VEKA facilities to be the first to achieve 3,343 miles, equivalent to that of the Kelly's Heroes Team traveling across the United States. Throughout this tour, employees are encouraged to gather donations for the local chapters of the American Foundation for Suicide Prevention (AFSP).

For us, the most significant part of this campaign in 2022 is raising awareness. We want others to start talking about mental health and suicide prevention. There are nationwide and local resources available, and it's vital that companies offer support through human resources or health care providers.

WD: The Loneliest Road and, really, all CSR initiatives are ultimately about fostering, cultivating and supporting community. What else is VEKA doing in terms of community? And within the industry?

SD: We have several community-based initiatives taking place throughout the year: donating to military support groups, donations to local charities



during the holidays and supporting local schools, police or fire departments. In conjunction with our VEKA Employee Recreation Committee we hold large family-based events for employees, and simple initiatives like providing an ice cream day in the middle of summer.

But the biggest responsibility we have is educating our employees and building the next generation workforce through programs like VEKA Academy.

WD: Tell me more about VEKA Academy. How does it help manufacturers?

SD: VEKA Academy has been around for eight years and is a valuable tool to accomplishing this. We are entering the next phase for the future of Academy: building a hands-on Education Center at our corporate headquarters in Pennsylvania. This new center will serve multiple purposes, from onboarding new employees to educating customers and showcasing industry partners.

Kevin Seiling: With the aging of the manufacturing workforce and gradual retirement of the baby boomer generation, new people are entering the industry from outside, unlike previous generations who learned over time from the inside. New and newly promoted employees need training, and it can be difficult for supervising managers to find the time. VEKA Academy is a two-day event, taught by our dedicated employees, who have years of experience in the industry, where employees—ours and other companies’—can receive the training they need.

As a leader in the vinyl window and door profile industry, VEKA offers this course to our customers and our employees, designed for entry to mid-level, sales, production, engineering, purchasing, marketing and management personnel. At VEKA Academy, they get “Windows 101” and a better understanding of the entire process in a short period of time rather than through long, extended training.

We care about the company, we care about the customer, and we care about the next generation. We’re going to train them so our customers will continue to get the knowledge and service they are used to, after the current generation has moved into retirement.

Meet with Steve, Kevin and more of the VEKA team, and even some of the cyclists participating in The Loneliest Road, at GlassBuild America Oct. 18-20 in Las Vegas. Booth #6084.

WD: How did the idea for the Education Center evolve? How does the Center help the industry?

KS: Our entire industry faces a labor shortage, exacerbated by the aging workforce. The Education Center is one way to help mitigate the impact on our and our customers’ businesses. Training programs like this and VEKA Academy help the next generation understand all the things that we store in our head over the years.

We work closely with our customers to design products to meet the requirements of their market. There are different options for rollers and handles, balances, tilt latches, locks, keepers, etc. If we have all that in the Education Center, it’s similar to the GlassBuild experience, where you can see everything: products that we have tested from qualified suppliers that we have worked with.

How our products are made matters. Our customers trust us to supply them good information. It’s all part of our mission in building long-term relationships. We understand our partners’ needs better than anyone and offer superior solutions not just for products, but also for digital services, logistics and customer care.

WD: How do programs like We Care, We Act, We Grow and the Education Center make the industry better?

KS: We place value-based corporate management, which keeps the needs of future generations in mind, at the heart of all that we do. We base our growth on long-term partnerships, developing employee talent and environmental responsibility.

Our mission has inspired us to think bigger and strive for better in the future we’re shaping. When it comes to training and development, we strive to create a fulfilling experience filled with opportunity. Leadership training, apprenticeships, professional qualifications and more will benefit from initiatives like VEKA Academy and the Education Center. These offer plenty of scope for employee progression and help collectively take VEKA, VEKA people and VEKA customers to new heights. ■





YOU ASKED.



Lighter, more comfortable PPE
that stands up to your needs.

Glass Manufacturers
TRY IT FREE!

WE ANSWERED.

Best-In-Class Protection for a Dangerous Job

Cut A9 Garments up to 30% Lighter

Revolutionary AeroDex® Technology garments are lighter, more comfortable, and deliver critical protection.

Gloves that Last 6X Longer

Our entire line of gloves delivers a combination of high cut resistance, dexterity, and glass-industry-approved coatings.

Unmatched Service & Savings

Magid leads the safety industry with revolutionary innovations in PPE, a team of safety experts, skilled in-house manufacturing, and a worldwide network of suppliers for head-to-toe PPE.

See us at GlassBuild America, booth 7087.



magidglove.com/windowanddoor
800-203-9540

MAGID

Safety at work®



SEE EVERYTHING IN FENESTRATION AND GLASS, OCT. 18-20 IN LAS VEGAS

BY KATY DEVLIN FOR WINDOW + DOOR MAGAZINE



GLASS BUILD 2022

“S

ee Everything.” That’s the theme of 2022 GlassBuild America: The Glass, Window & Door Expo, taking place Oct. 18-20 at the Las Vegas Convention Center. According to organizers from the National Glass Association, the tradeshow will be the largest gathering in North America, where representatives from all segments of the glass and fenestration industries can see new product and equipment solutions, interact with customers and suppliers, participate in continuing education and learning opportunities, and more.

“The number one reason individuals attend is to see the exhibitors and their products, but we also often hear they would like more education and more casual networking,” says Molly Grenn, NGA event director. “Coming up in Las Vegas, we will be delivering both.”

“YOU HAVE AN OPPORTUNITY TO NETWORK WITH COUNTLESS SUPPLIERS AT GLASSBUILD AMERICA 2022”

Cristina Murray, director of marketing, North America for Quanex

GlassBuild 2022 will feature more than 440 exhibitors over a 155,000-square-foot show floor. The show will include more than 90 international exhibitors representing 24 countries. Additionally, more than 70 first-time exhibitors have signed on for the show. GlassBuild exhibitors will highlight every relevant category for residential window and door manufacturers: machinery, complete products and systems, software, component products, hardware and more. (See new product innovations set for display at GlassBuild in Window + Door’s Product Showcase, beginning on page 38.)

Officials from the Window, Door and Glass Vertical Group at 2020 + CompuSoft say that GlassBuild is a fantastic event that no one in the fenestration industry should miss. Ron Crowl, FeneTech, Bill Natalie, contractERP, and Tyron Ball, Soft Tech, report that the event has always been an excellent opportunity to catch up with old friends and meet new friends. “Being technology-obsessed, we particularly enjoy seeing what innovations emerge from our industry each year,” they say.

“Our team is very excited for this year’s GlassBuild show,” says David Harris, product manager – Exterior Solutions, American Renolit Corp. “We always look forward to meeting lots of customers and prospects at the event, but the expectation for the show this fall is very positive. It was good to see the show come back up last year, and

GLASSBUILD TO-DO LIST

- ➔ “Ask questions. Evaluate responses. Scout out potential new partners that offer the insights and materials you need to power your operation to new heights of quality, efficiency and performance.”—*Cristina Murray, director of marketing, North America for Quanex*
- ➔ “Get together and compare notes with other industry partners to see their vision for the future of our industry.”—*Morgan Donohue, president, Erdman Automation*
- ➔ “Get on the same page and continue to overcome the challenges that impact us all.”—*Greg Koch, vice president of sales and marketing for Deceuninck*
- ➔ “Keep [your] finger on the pulse of the industry.”—*Jennifer Walrich, product manager at Magid Glove and Safety*
- ➔ “Reconnect with the broader market after a limiting period through COVID.”—*Drew Anthony, marketing manager, Anthony Innovations*
- ➔ “See the exhibitors and their products and get in on education and casual networking.”—*Molly Grenn, NGA event director*

SCHEDULE AT A GLANCE

Registration Hours	Tradeshow Hours	GlassBuild Main Stage Programming
Monday, Oct. 17 9 a.m.-4 p.m.	Tuesday, Oct. 18, 10 a.m.-5 p.m.	Tuesday, Oct. 18, 10:30 a.m.-3 p.m.
Tuesday, Oct. 18 7:30 a.m.-5 p.m.	Wednesday, Oct. 19, 10 a.m.-5 p.m.	Wednesday, Oct. 19, 10 a.m.-4:30 p.m.
Wednesday, Oct. 19 9 a.m.-5 p.m.	Thursday, Oct. 20, 9 a.m.-1 p.m.	NEW IN 22:* Tailgate Party
Thursday, Oct. 20 9 a.m.-1 p.m.		Thursday, Oct. 20 12 p.m.-2 p.m.

**Celebrate a successful GlassBuild 2022 at the Tailgate Party at the end of the show, featuring music, games, food trucks, beverages, and a grill throwdown among industry members. A separate registration is required; \$10 per person, with ticket proceeds going to the NGA Foundation.*

JOIN THE TOP COMPANIES

The biggest manufacturers in the business attend GlassBuild year after year. Join them to gain a competitive edge.

77%

of all companies on Window + Door's Top Manufacturers List attend GlassBuild

100%

of Residential Window Manufacturers in the highest tiers of Window + Door's Top Manufacturers List attend GlassBuild

WORLD MILLWORK ALLIANCE CO-LOCATES WITH GLASSBUILD IN 2022

The 57th edition of the World Millwork Alliance (WMA) Annual Convention & Tradeshow will co-locate with GlassBuild in Las Vegas. The WMA Annual Convention & Tradeshow brings together the global millwork industry, including millwork distributors, manufacturers of products and services, pro dealers, sales representatives, and architects, builders, contractors and remodelers.

"WMA looks forward to working with NGA to explore the synergies between our events," said Rosalie Leone, WMA president & CEO. "Several of our member supplier companies exhibit at both of our shows, and this is another opportunity to expand our horizons as our members respond to supply chain and labor challenges, among other pressures." GlassBuild attendees will have access to all WMA exhibits.

attendance was good, but we are really expecting a very busy show in October. We are hearing a general consensus that more people are planning to attend this year."

Investments and trends

"Attending GlassBuild is [a] way to keep our finger on the pulse of the industry," says Jennifer Walrich, product manager at Magid Glove and Safety. Attendees to the show can see new product innovations and equipment solutions firsthand and have much-needed face-to-face interactions with their suppliers and customers.

"You have an opportunity to network with countless suppliers at GlassBuild America 2022," adds Cristina Murray, director of marketing, North America for Quanex. "Make the most of your time there. Ask questions. Evaluate responses. Scout out potential new partners that offer the insights and materials you need to power your operation to new heights of quality, efficiency and performance. Put this world-class event to work for your leadership team, workforce and customers."

Additionally, the show helps companies prepare for trends and opportunities to come. "GlassBuild is a time to get together and compare notes with other industry partners to see their vision for the future of our industry," says Morgan Donohue, president, Erdman Automation.

Facing challenges together

The industry returns to GlassBuild following a year of uncertainty and challenges. Companies struggle to find labor, while tackling continuing inflation and supply chain issues. The best way to try to tackle those challenges, according to attendees and exhibitors, is by coming together. At GlassBuild, attendees can meet face-to-face with suppliers and customers, network and share solutions with peers, hear important market updates and forecasts from experts, learn about new technologies to ease top challenges, and more.

"When there are ongoing challenges that affect everyone in our industry, it is important to connect," says Greg Koch, vice president of sales and marketing

for Deceuninck. “GlassBuild provides the industry with the opportunity to do just that: get on the same page and continue to overcome the challenges that impact us all. We are looking forward to sharing what Deceuninck has done on this front to remain innovative, reliable and sustainable.”

“Like nowhere else, [GlassBuild] offers up an immense range of potential solutions to any supply chain challenges you may be facing,” adds Quanex’s Murray. “GlassBuild America is the perfect place to supercharge your supplier search. Where else can you go face-to-face with potential suppliers that may be unknown to you now?”

Return to normal

Exhibitors say GlassBuild America 2022 will continue the industry’s return to more normal operations since the start of the pandemic. The show was cancelled in 2020 and returned in person in 2021, but welcomed fewer attendees and international exhibitors due to travel challenges and continued pandemic concerns.

“After an unpredictable past couple of years, it is exciting to get back on the show floor,” says Deceuninck’s Koch. “We are looking forward to reconnecting with our customers at a highly anticipated event such as GlassBuild in an in-person setting. It will be our pleasure to share with our booth visitors what Deceuninck has been hard at work on recently.”

Drew Anthony, marketing manager, Anthony Innovations, says the show will provide an opportunity “to reconnect with the broader market after a limiting period through COVID,” he says. “We look forward to sharing a range of new products with the wider fenestration market.”

Ann Greco, strategic marketing director, Salem Fabrication Technologies Group Inc., adds that in-person events were missed during the height of pandemic closures. “In-person events are better than the virtual online events we’ve had to make do with over these past couple of years,” she says. “The networking, customer relationship-building, search for new suppliers, and industry educational opportunities cannot be matched virtually.” ■

RESOURCES, EDUCATION AND NETWORKING

Attendees can find additional tools and resources to tackle the industry’s top challenges at a series of education and networking events during GlassBuild.

Industry Pavilion

“Resources Found Here” is the main message of this year’s Industry Pavilion, the hub for members of association sponsors, The National Glass Association (NGA) and the Fenestration and Glazing Industry Alliance (FGIA). Attendees can meet fellow members and staff, learn about training and networking opportunities, and find business and technical resources, or just find a spot to kick back in the lounge area and enjoy the commotion of GlassBuild.

Editorial staff of official GlassBuild publication Window + Door will also be in the booth on Tuesday, Oct. 18 from 10:30 to 11 a.m. and Thursday, Oct. 20 from 9 to 10:30 to chat about industry developments, top challenges and trends in the ever-evolving residential window and door industry.

GlassBuild Main Stage

New at this year’s show is the GlassBuild Main Stage, located in booth #10206, sponsored by Window + Door and Glass magazines, GlassBuild’s official publications, and NGA’s My-GlassClass.com. All attendees have an opportunity to access quick-hitting, need-to-know industry forecast and trend information. Topics will include everything from a technical and codes update to the construction economic forecast, and an important discussion about mental health awareness.

FGIA will present three sessions at this year’s Main Stage. And, for the first time at GlassBuild, NGA is coordinating a Women in Glass and Fenestration networking event. Visit glassbuildamerica.com for the complete Main Stage schedule.

Tailgate Party

Brand-new for 2022, attendees and exhibitors can participate in the GlassBuild Tailgate Party, Thursday, Oct. 20, from 12-2 p.m.

“The show will close this year with the GlassBuild Tailgate Party to give attendees a chance to unwind with their industry friends with music, games, food trucks, beverages, and a grill throwdown among industry members,” says Grenn. “It’s going to be a great time.”

Registration is \$10 per person, with ticket proceeds going to the NGA Foundation to support glass and glazing industry educational programming. The Tailgate Party is sponsored by CRL and is open to all registrants of GlassBuild. Learn more at glassbuildamerica.com.

WE NEVER WANT TO BE
JUST A VENDOR.

WE WANT TO BE
A PARTNER.

ERDMAN® HIGH SPEED IG LINE WITH ROBOTIC UNLOAD



Erdman is your local partner in robotics and automation. We will work with you to innovate and reduce your labor requirements to provide a safer environment at your facility as well as a significant cost savings.

Erdman is unique in that we focus on all facets of window manufacturing and can help you integrate your departments and create a safer, more efficient flow through automation.

For 29 years we have concentrated completely on the North American market. We started small, service focused, nimble and innovative. We continue that focus today even as we are big enough to handle the largest of projects.

Visit www.erdmanautomation.com or call 763-389-9475 for more information.

VISIONARY THINKING. EXCEPTIONAL DOING.



See us at GlassBuild America, booth 5194.

SEE EVERYTHING

GLASSBUILD 2022 PRODUCT PREVIEW

GlassBuild America: The Glass, Window & Door Expo is where residential fenestration manufacturers and suppliers come together to resolve the industry's most pressing challenges.

From window systems and hardware to automated IG and vinyl processing equipment,

and all the pieces in between, GlassBuild brings the entire supply chain together at the biggest fenestration event in North America.

Join all the biggest companies in the industry and learn about the latest trends in supplies and machinery, network with suppliers and experience firsthand the industry's

newest and what's next in technology and products.

Following are highlights straight from exhibitors. Browse through this section and see just a fraction of the products, services and supplies that will be on display in Las Vegas.

WINDOW AND DOOR SYSTEMS + DESIGN



01

Deceuninck North America

The 326 Series windows are an integrated system consisting of casement, awning, picture window, side load single hung and single slider configurations, and are engineered to excel in light commercial and premium residential installations. Available with integral nailing fin, retro flange or block frame 3-½-inch frame width with clean, modern lines. In a range of solid and laminated colors with multiple T bar and astragal options for hung/slider as well as casement/awning/picture window, the system is designed for enhanced thermal performance and DP50 baseline. Booth #8004. 513/539-5505 | DeceuninckNA.com



02

VEKA Inc.

The Corsair door is customizable for new construction or replacement use in two-, three- and four-panel configurations up to eight feet high. Multiple color options are available for the interior and exterior as well as an array of hardware options in standard and multi-point locking systems. The saddle-style door glides on a metal rail and heavy-duty, face or end adjust steel rollers. The Corsair delivers performance with its 1¼-inch IG capacity, a DP50 class rating and impact capability. Booth #6084. 800/654-5589 | vekainc.com



Some things are better on the inside.

Blink puts the blinds between the glass where they clearly make better sense. (Not to mention being a lot less awkward.) Our unique design eliminates strings, wands and dusting to offer easier control, uncluttered looks, and years of enjoyment. All of which should really help get customers' attention. And, benefit your bottom line.

blink

BLINDS + GLASS



01

Caldwell Manufacturing

Caldwell Manufacturing will promote Enginuity, a patented system for hung or slider windows and patio doors that features a sleek, concealed design that fits completely in the top track of the patio door. The Enginuity patented system can also be nestled in the side jamb or a compact design attached to the lift rail of the hung window. The Enginuity actuator can be on either side and adapted to any desired travel length, from 4 inches or less to fully open. Booth #6046.

585/352-2870 | caldwellmfgco.com

02

Decco Extrusion

Decco Extrusion's single-hung window sash can be lifted only from the bottom and has fixed glazing in the upper part. The company reports it is energy-efficient and easy to operate, and features include an integrated flipper suitable for new construction, triple labyrinth lock sealing, integrated accessory slots and handles integrated in the sash frame. The window has a chamber in the frame and in the fixed post for mounting a mosquito net, a sloped sill for rainwater drainage and a rib to stiffen the sill and prevent deformation. Booth #8118.

+(48) 6655-852480 | decco.eu

03

Panda Windows & Doors

Inspired by exotic locations, Panda's line of custom contemporary pivot doors mixes modern design and durability. Soaring up to 18 feet tall and 9 feet wide, the Voyage Select Pivot Door comes in 10 designs, or the option to choose from a variety of tracks, panel profiles, glass options and hardware to customize a system. The doors are easy to use and operate, even when panels exceed 300 pounds, according to company officials. Each unit is fabricated with a concealed self-closing mechanism for ease of use and a multi-point locking system. Booth #10130.

702/643-5700 | panda-windows.com

Invested in **INNOVATING** the Window and Door Industry



See us at GlassBuild America, booth 7040.

At Chelsea, we're continually investing in the future with new technologies to create state-of-the-art products to better serve you.

Chelsea Building Products has developed hundreds of innovative products by listening and really hearing what our customers need in a new product design. 3D printing capabilities enable us to let our customers touch the product while it is in development. Combine that with industry research and a new product is formulated. This partnership in innovation cultivates a true relationship with our customers. We translate your ideas into innovative products. **Call us today to see what we can create together.**



We are Building Solutions.

We design the window and door product to meet the needs of your market segment.



Scan to learn how to become a fabricator with Chelsea Building Products.



01

Chelsea Building Products

Chelsea Building Products introduces the 9600 Series Single Hung designed for new construction featuring the side load bottom sash. The Side Load Single Hung series includes coordinating Picture Window, XO Horizontal Slider and XOX Horizontal Slider windows. The 9600 utilizes a universal frame system for the Single Hung and Horizontal Slider for ease of manufacturing. A welded frame and sash enhance structural integrity and increase weatherability, say officials. The 3-inch frame has a streamlined, clean exterior which offers an aesthetic design that is easy to manufacture. This model accepts ¾-inch insulating glass. Booth #7040.

412/826-8077 | chelseabuildingproducts.com

02

Gutmann Orama

Orama Zero merges the outside with the inside, as its door panels slide over a 1-centimeter-wide slit in the floor. The space between tracks is covered with the same floor material to create a continuous space. Booth #9072. 416/488-6266 | gutmann-orama.com

Creative Millwork Grille Products



creative
MILLWORK

ENGINEERED GRILLE SOLUTIONS

See us at GlassBuild America,
booth 8064.

RESIDENTIAL | COMMERCIAL | HISTORICAL | SPECIALTY



VCUT ONE PIECE EXACT REPLICATIONS!

EXPERTS IN GRILLE SOLUTIONS
& PROFILE REPLICATION

OVER 1500 ENDWORKS



**PRE-NOTCHED KITS WITH
NO HASSLE ALIGNMENT**



CreativeGrillePro+

An Easy & Automatic Ordering/Quoting System

ALUMINUM

Elaborate Custom & Standard Grille Patterns
To Make Your Next Project Stand Out

- AAMA 2603/2604
- ANODIZED
- KYNAR AAMA 2605
- STAINABLE WRAPS
- PRIMED
- INTERIOR/EXTERIOR WRAPS



VINYL

A Classic Choice To Establish Style
Created With Quality In Mind

- COLOR MATCHED
- PAINTABLE/STAINABLE
- INTERIOR/EXTERIOR WRAPS



BRONZE

V-CUT Specialty Grilles Created To
Exceed Client Expectations

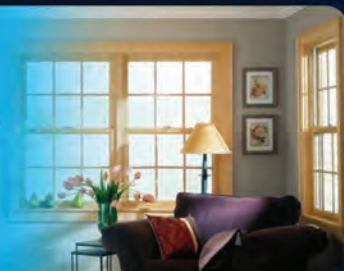
- BEADBLASTED
- NATURAL
- POLISHED



WOOD

Breathtaking Crafted Grilles Created By
Our Precision Carpenters

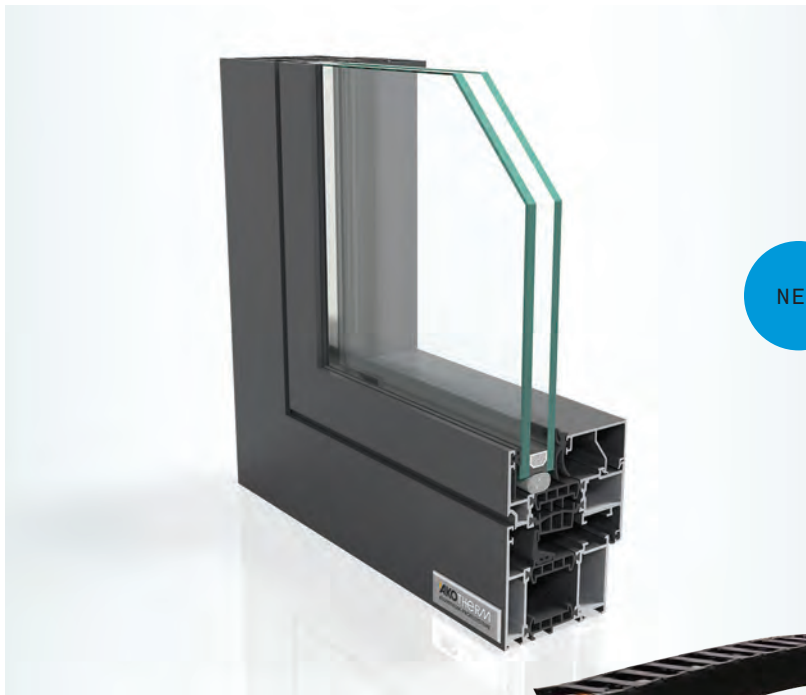
- SOFT WOODS
- HARD WOODS
- SPECIALTY WOODS



Visit us at
www.creativemillwork.com



01



01

Akotherm Aluminium-Profilsysteme

The AT 740 window offers product quality with all the benefits one expects from a “state-of-the-art” aluminum window, according to the company. Burglar resistance up to RC3, sound protection and excellent insulation in compliance with the latest Energy Saving Ordinance can be implemented with the system. Booth #8124.

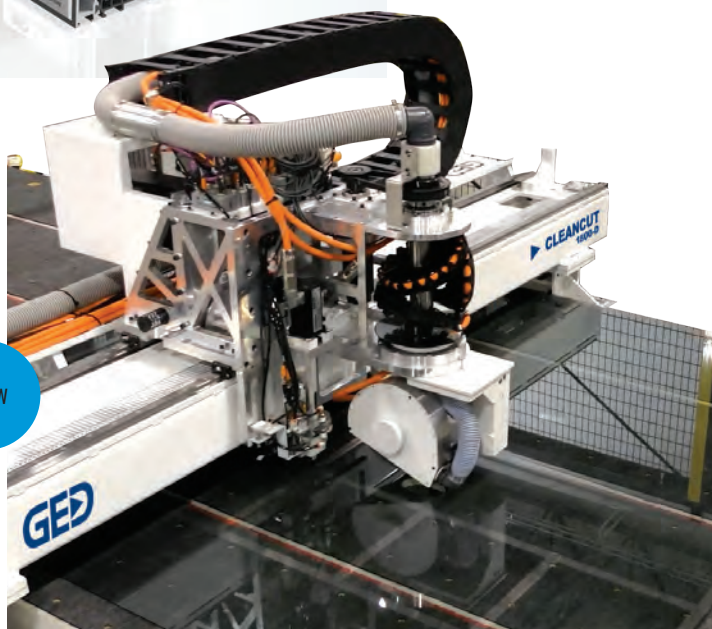
917/734-8169 | akotherm.de

(NOT PICTURED)

Stylex Windows & Doors

Stylex offers aluminum windows, operables, terrace and patio doors, steel systems and fire windows. Whether for renovation or new construction, the company’s design team works with owners, architects and contractors to achieve innovative solutions, providing in-house shop drawings and in-house testing. Booth #9035.

951/783-9302 | torrancealuminum.com



02

02

GED Integrated Solutions

GED’s CleanCut 1800 Series of glass cutting tables—which includes a cutting-only model (1800) and an edge deletion and cutting model (1800-D)—complements the CleanCut 1700 Series. It is scaled to accommodate larger glass at a maximum of 96 by 130 inches (244 by 330 centimeters). The systems combine patented technologies in hardware and software that allow customers to produce more insulating glass units in a shift, more efficiently and at higher quality, say company officials. Programmable cutting and deletion force uses electro-pneumatic actuation to deliver precise amounts of pressure for each glass stock resulting in reduced glass waste due to breakage, improved scoring and deletion quality and reduced operations disruption, according to the company. Booth #2010.

330/963-5401 | gedusa.com

**It's gorgeous out today.
But are you ready to
weather a storm?**

Help customers stay
in control and safe.
Discover impact-resistant,
customizable sliding doors
that tackle it all.



LEARN MORE AT GLASSBUILD AMERICA

October 18-20, 2022

Las Vegas Convention Center, South Hall

BOOTH 9112



marketing@phtech.ca

1-800-463-4392

01



01

Diamon-Fusion International

The FuseCube Express is DFI's newest coating machine that applies Diamon-Fusion protective coating onto both sides of the glass. The coating is applied through a proprietary chemical vapor deposition process, transforming ordinary glass into a high-performing, water-repellent surface. Unique to its class, the FuseCube Express can treat 1 to 5 lites in under 10 minutes and has a minimal footprint (5 by 6 feet) that can meet the demands of both small and larger-sized fabricators, according to the company. The machine also includes a touch screen monitor, built-in evacuation system, multi-run cartridge system, real-time monitoring, and backup systems. Booth #5232.

949/529-3029 | dfisolutions.com

NEW

03



02



02

Erdman Automation Corp.

Erdman's Vertical Insulating Glass Parallel Process Line derives its name from the innovation of shuttling the topping lite to a back lane, allowing the two glass lites to run parallel to each other, leading to a significant increase in speed, according to the company. Compared to traditional IG processes, the line is more ergonomic and has less wasted motion by the operator, company officials report. There are no manual touches to glass after washer and no close contact between operators. It requires three to four operators. The line also includes auto placement of spacer location, and argon is filled and finished on the line. Booth #5194.

763/389-9475 | erdmanautomation.com

04

NEW



05

NEW



03

HHH Equipment Resources

HHH Equipment Resources, a division of Salem Fabrication Technologies Group Inc., will introduce Kodiak, an exclusive line of glass edging equipment designed specifically with North American fabricators in mind. Kodiak glass edging machines offer exceptional edge quality, competitive production speeds and a proven track design, according to the company. The machines are designed for continuous use and the handling of large lites of glass. The machines feature heavy-duty frame construction and 77-pound spindles, a long-lasting caterpillar track system, large, user-friendly display screens, automatic lubrication and UL-certified components. Booth #5050.

800/234-1982 | HHHGlassEquipment.com

04

Haffner Machinery

The SAC-845 automates the application of screen mesh to a pre-assembled screen frame. Users can use barcode scanning or direct ERP input to identify the screen frame, automatically choose and apply the correct screen mesh, then insert the screen spline and trim excess perimeter screen mesh. The estimated typical cycle time for a 24- by 36-inch window screen frame is approximately 35 seconds including all handling, according to company officials. Model SAC-855 can accommodate larger sizes, such as 48- by 96-inch patio doors, as well as smaller window sizes. Booth #5158.

269/910-0605 | haffnerma.com

05

Elumatec North America Inc.

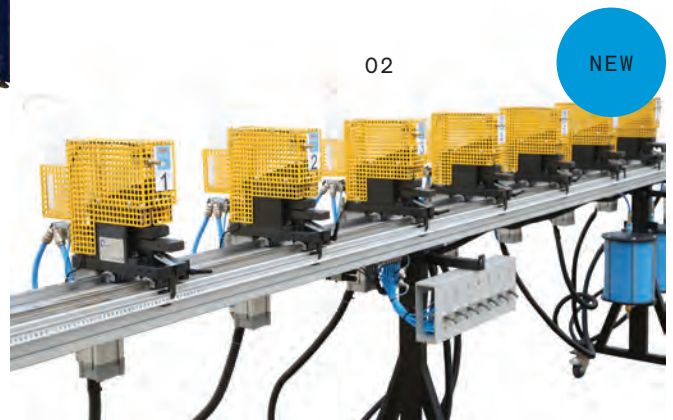
Elumatec will introduce the SBZ118 Profile Machining Center: a compact 3-axis profile machining center with optional 5-sided machining said to ensure high productivity through precision, ergonomics and customizable equipment options. The new machine combines the functionality of larger models with a compact design of 9.84 feet machining length. Although it requires little space in production, the 3-axis profile machining center offers full functionality for routing, drilling and notching. Booth #5110. 574/273-1790 | elumatec.com

MACHINERY + EQUIPMENT

01



02



03



01

Eastman Machine Co.

Eastman's static table system is capable of cutting, marking and punching virtually any flexible material at speeds of up to 60 inches per second. The static cutting table can process materials like nylon and vinyl as well as difficult-to-cut materials—such as polystyrene, p-tex and fiberglass-polyester blends. The system's high-precision configuration features multi-axis motion for more defined and accurate cuts. Material is spread across the static table by an operator or with the use of a pneumatic gripper bar. Booth #6276. 716/856-2200 | eastmancuts.com

02

Shoham Machinery Ltd.

The Simultaneous Punching System perforates several points at once with fast and accurate results. Each compact punching unit is designed for heavy-duty continuous work with a press force of up to 1.5 tons. The units slide smoothly with a soft finger touch and can be locked in any position set by a measuring tape, according to the company, which reports the system has a failsafe fully pneumatic interface "Plug N Punch" with no need for electricity, oil refills or maintenance. One foot lever activates up to eight pneumatic units at once in a fraction of a second. Booth #3098. + (972) 3679-7600 | shoham-machinery.com

03

Mecal USA Inc.

Mecal's MC312 Taurus 5 Axis Machining Center is an enclosed 8-meter (315-inch), 5-axis machining center for ultra-high-speed machining of aluminum, steel, brass, copper and PVC materials. The Taurus offers efficiency and productivity; it is on average 30 percent faster than other machines, according to the company, and can be used in numerous applications including windows and doors. Booth #5076. 574/520-1871 | mecalusa.net

ONE COMPANY, TWO BRANDS!



IG & WINDOW SYSTEMS
& SOFTWARE



PRE-HUNG DOOR
MACHINERY



Improved quality and
increased capacity at
the lowest total cost.



Connected and
optimized through
software.



Flexible solutions
with high returns on
investment.



Visualize your production floor & tour machinery:
gedusa.com/window+doorexperience



31100 Diamond Pkwy
Glenwillow, OH 44139
330-963-5401
www.GEDUSA.com



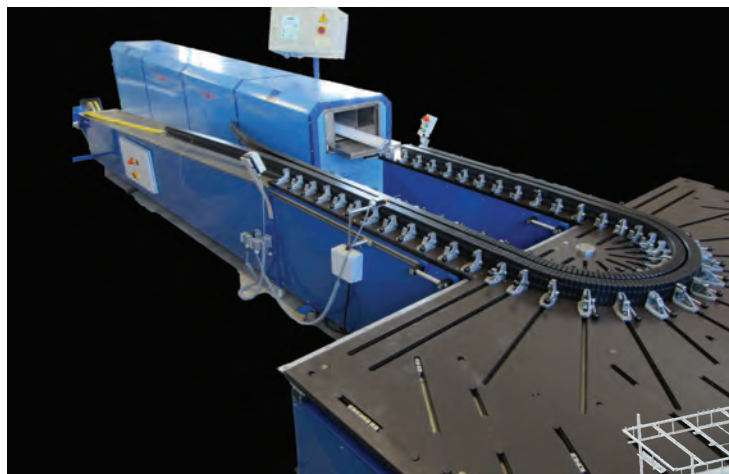
GED MADE,
SOLD, AND
SERVICED
IN THE USA!

Visit both GED
and Norfield at
booth # 2010

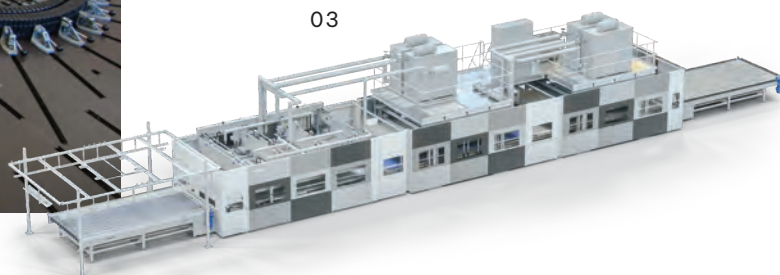
IG Systems

Software

Window Systems



01



03

02



NEW

01

Witte North America

Witte North America is the manufacturer of Quality Vinyl Bending Systems, which consists of a hot air oven and bending table for a no-mess bending experience. This System is also available with optional side-extensions for bending extended frames. Witte has been manufacturing vinyl bending equipment for over 35 years and provides support and expertise to its customers, years after initial purchase of equipment. Attendees can visit Witte to discuss how to elevate their bending game. Booth #8011. 905/678-2397 | witte-na.com

02

Better Vacuum Cups Inc.

Better Vacuum Cups Inc. will exhibit its all-new vacuum cup SS-R200, the all-new round vacuum cup for all CNC routers. This Better Vacuum Cup comes in three standard heights such as 105 millimeters, 150 mm and 200 mm for the CMS fabricators. Like all BVC cups, this cup does not need the foam gasket to be used. The BVC flexible lip seal mirrors the part for a perfect lip seal, say officials. Booth # 3069. 909/606-0140 | GreenBVC.com

03

Burkle North America Inc.

Burkle North America Inc. will showcase its Inline Flat Lamination system, which officials call a truly advanced way to laminate glass. Whether in the field of security, sound insulation, building construction or multimedia functionalities, the versatile application of laminated glass has no limits, they say. With the development of inline flat lamination, Burkle is taking this idea further with an auto-clave-free process. This innovation enables fast lamination with short cycle times and low energy consumption, with the highest possible quality. Booth #6244. 714/379-5090 | burkleamerica.com

A large industrial machine, the LiSEC TPA, is shown in a factory setting. It has a white and red body with a black safety cage. The machine is used for producing insulating glass units with thermoplastic spacers. The word "TPA" is written in large red letters in the top left corner of the image.

TPA

LiSEC

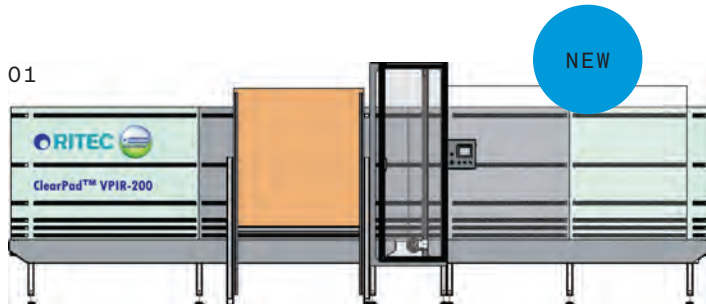
Visit us @ GlassBuild America
18 - 20 October | Las Vegas
Booth 5018

High Speed and High Quality

New standards for the production of insulating glass units with thermoplastic spacers

- Most accurate TPA material application
- Permanent support of all center glasses
- 20% higher output due to vertical lift over

01



02



03

01

ClearShield Technologies

ClearShield Technologies is introducing the ClearPad VPIR-200 vertical pad for the fast application of Ritec ClearShield for protection and maintenance of glass. ClearPad VPIR-200 is the most efficient way of pad-applying Ritec ClearShield, according to the company. It offers an increased and consistent coverage rate of the glass, and features infrared-reflective pre-heating for faster processing. The system reduces handling, labor costs and application training, and features management and control software to maximize product usage and avoid waste. Booth #7049. 847/671-4584 | clearshieldonline.com

02

PDS IG Equipment

PDS ProFilm System allows fabricators to protect their glass immediately through a high-speed inline applicator that can maintain insulating glass line speeds. Protective films ensure product cleanliness from factory to finish, reducing potential for damage during manufacturing, and end-of-job cleaning time and costs. The PDS ProFilm System features auto measuring technology and can film more than 1,500 operating-size units per shift. No film trimming is required. A variety of module sizes and film widths are available. Booth #2035. 608/644-8000 | pdsigequipment.com

03

Walco (Powered by Novacel)

Walco VX2 is a vertical laminator designed specifically for the application of protective film on insulating glass units and flat glass. Fully automated, the VX2 uses technology that allows the application of protective film on both sides of the glass in a single pass because of its automated adjustment system. Equipped with intelligent technology, it is automatically adjusted to the length and height of glass up to 3,000 millimeters. Booth #2052. 909/483-3338 | walcotech.com



LEADERS IN FABRICATION AUTOMATION



Meet Joseph Machine Company

Joseph Machine Company engineers lineal processing equipment and software that cut cycle times, boost part quality and eliminate unnecessary scrap. Proudly based in the USA with the best service in the industry, Joseph is ready to be your trusted partner in improving your production.



See us at GlassBuild America, booth 2244.



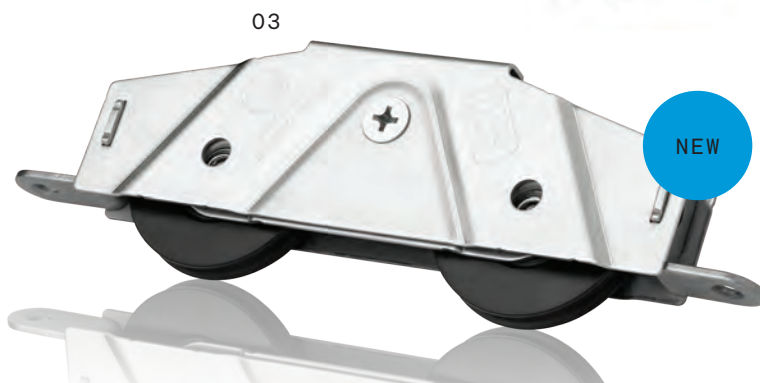
CUT, FAB, WELD, CLEAN

Joseph specializes in stick to opening fabrication solutions - standard high speed sawing solutions, custom fabrication centers, welders, cleaners, automatic pass through welding/cleaning systems, Industry 4.0 data collection systems & more



e - SALES@JOSEPHMACHINE.COM
p - 717.432.3442

HARDWARE, COMPONENTS + SEALANTS



01

FUX Maschinenbau & Kunststofftechnik GmbH

FUX Maschinenbau & Kunststofftechnik GmbH will exhibit its new 83-LMP-37 5gallon/20 kilogram Platen/Pail Melter for PUR Hotmelt adhesive. The pre-melter for 5gal/20kg pails is suitable for PUR adhesive. The independent control system of the external pre-melter can be adapted to different laminating machines, and the product has a melting capacity maximum of 48 kilograms per hour. Other features include a 5-inch touch screen display. Booth #6074. 540/550-4596 | fux.at

02

Quanex

Quanex's Super Spacer warm-edge technology is used in energy-efficient window designs in residential and commercial applications. Super Spacer is a premium energy-efficient and sustainable solution for high-volume production of dual- and triple-pane insulating glass. A true dual-seal warm-edge spacer line, Super Spacer products use a high-performance acrylic adhesive for their structural seal, backed by a moisture vapor seal. Super Spacer offers energy efficiency, sustainability, and has demonstrated proof of performance, reliability and thermal excellence, say officials. Booth #7026. 740/439-6429 | quanex.com

03

Anthony Innovations

The 9000 Series rollers from Anthony Innovations can handle even the biggest panels. The system can manage loads up to 800 pounds. It features wheels available in stainless steel and in CNC-machined polymer material. A single-bogie carriage offers balanced load distribution and smoother glide, and customizable mounting tabs and spacers make it easy to adapt different existing systems. Booth #10078. 747/258-5873 | anthonygroup.net

SETTING **NEW** STANDARDS



HIGH-PERFORMING
ALUMINUM HANDLE



SINGLE WHEEL
ROLLER



TANDEM COMPOSITE
WHEEL ROLLER

Innovation is at our core. AmesburyTruth introduces the Keystone series of sliding door products engineered to complement the vinyl patio door segment. Featuring a handle set and 6 rollers that meet AAMA standards, this series was developed to optimize entry level sliding patio door performance and price.

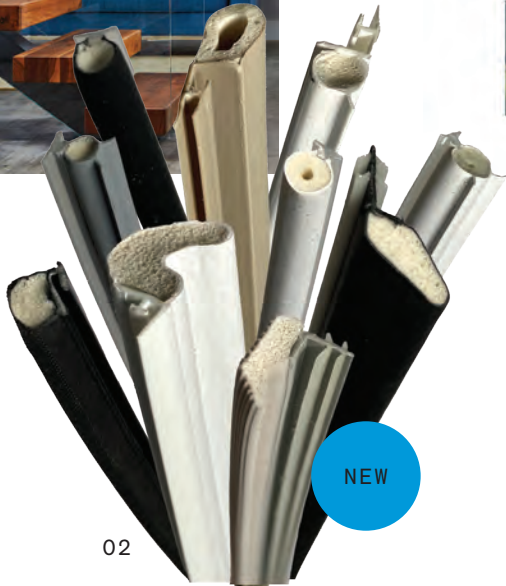
**AmesburyTruth—raising the standard in the industry.
It's what we do.**

**Visit us at GlassBuild America,
Booth #8029**

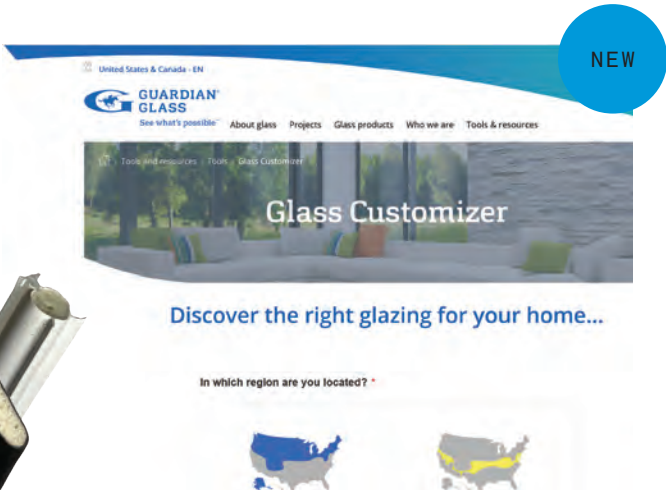
Let our North American team work for you, AmesburyTruth has the portfolio to cover all your patio door needs. Contact us at innovation@amesburytruth.com for more information.

 **AmesburyTruth™**
Engineered Solutions. Trusted Results.

01



02



03

01

Vitro Architectural Glass

Starphire Ultra-Clear glass by Vitro Architectural Glass (formerly PPG glass) is 87 percent less green than ordinary clear glass and offers pure, undistorted transmitted color with no grays or yellows. With its signature azure blue edge, Starphire glass maintains its clarity and true color transmittance at thicknesses up to 19 millimeters (¾ inch), according to company officials. Express colors and patterns in their purest forms. Evoke luxury on doors, shower enclosures and more. Even in heavy thicknesses, Starphire glass transmits 90 percent of available visible light. Booth #6064. 412/820-8138 | vitroglazings.com

02

AmesburyTruth

AmesburyTruth introduces enhanced formulations within Foam-Tite compression products to offer softer weather seals with increased stability that meet the growing demand for larger, more expansive units. Weather seals with reinforced stiffeners can help to reduce shrinkage up to 50 percent and decrease air and water infiltration. Additionally, the company offers seals with less than five pounds of compression force to assist manufacturers in achieving ADA compliance. As a solution provider, AmesburyTruth can collaborate with manufacturers to find innovative options that decrease labor requirements when inserting weather seals. Booth #8029. 800/866-7884 | AmesburyTruth.com

03

Guardian Glass

Guardian will display its ClimaGuard 70 and ClimaGuard 55. CG 70 has a visible light transmission of 69 percent and solar heat gain of 0.35. CG 55 has a visible light transmission of 55 percent and a lower glare aesthetic. To further support its residential manufacturers, Guardian Glass recently launched the new Guardian Residential Glass Customizer website, a tool for manufacturers to connect with homeowners to help them understand glass performance. The site will funnel potential customers to the sales teams of our manufacturer partners. Booth #6194. 248/340-2141 | guardianglass.com

VISIT US AT
GLASSBUILD AMERICA
LAS VEGAS, NV
OCT 18-20
BOOTH #7112

Premier manufacturer of
pile and extruded weatherseal.
Products for the window
and door industry.



COMMITTED TO INNOVATIVE TECHNOLOGY



Ultrafab is proud to introduce Ultra Cell® MicroCellular Foam Seals.

This new technology offers better overall performance than any other weatherseal. It leads the industry in compression set resistance, weatherability, and color stability.

WEATHER SEALS AREN'T ONE OF THE THINGS WE DO, WEATHERSEALS ARE WHAT WE DO.



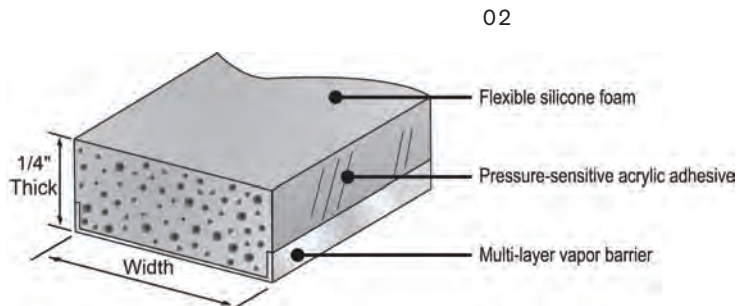
585-924-2186
Ultrafab.com



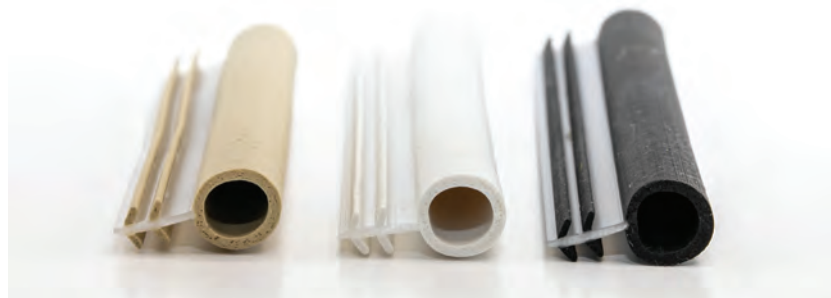
HARDWARE, COMPONENTS + SEALANTS



01



02



03

01

Novagard

Rapidly building adhesion and elastomeric strength while bedding or glazing, NovaFlex Qwik-Set Portable Adhesive and Glazing Sealant allows for hand glazing, field glazing and field installations when glazing tables aren't an option. The sealant is available in a fixed, 2-to-1 ratio dual cartridge and applies with a portable pneumatic gun. Achieving a tensile strength of over 15 pounds per square inch (psi) after 20 minutes and 55 psi after 30 minutes, NovaFlex Qwik-Set is useful in tight spots and for repairs, adheres without primer to most substrates and is AAMA-verified for strength and adhesion. Booth #7076.

216/881-8111 | novagard.com

02

Strybuc Industries

A flexible, silicone foam spacer product, Super Spacer provides the maximum perimeter insulation for sealed glazing units and prevents condensation. Desiccant-filled with pre-applied side adhesive, the structural foam spacer significantly simplifies insulating glass production, say officials. Featuring a vapor barrier backing, the product must be used in combination with conventional IG sealants such as hot melt butyl, polyurethane and solvent-free polysulfide. Dual seal equivalent sealants may also be used. Booth #9038. 610/534-3200 | strybuc.com

03

Ultrafab Inc.

Ultrafab will introduce its Ultra Cell MicroCellular Foam Seals that feature new technology that offers improved overall performance. The innovative product from the Ultrafab team leads the industry in compression set resistance, weatherability and color stability, according to company officials. The thermoplastic foamed interior of the seal also provides consistent low closing forces that can be tailored to users' application needs. Booth #7112. 585/924-2186 | ultrafab.com

CONSTANT FORCE BALANCES?

Vision Hardware has them!

Like all of our hardware offerings, we stock to your supply agreement and guarantee not to run you out!

Vision Hardware now offers a complete line of constant force balance hardware available for next day pick up or shipping from any of our 5 nationwide warehouse locations. Our CONSTANT FORCE BALANCE systems are designed to be "Plug and Play" to your existing fabrication without the need for any modifications. Best of all, Vision will inventory your components to your supply agreement, with guaranteed stock available. Vision Hardware balancers offer traditional and friction braking, top sash detents, non handed open shoes, multiple attachment and pivot bar options and have been tested and certified in accordance with AAMA 902 standards. Please contact Vision Hardware direct to schedule a presentation or receive samples.

See our line of Constant Force Balances at Booth #6206



(800) 220-4756 • www.visionhardware.com



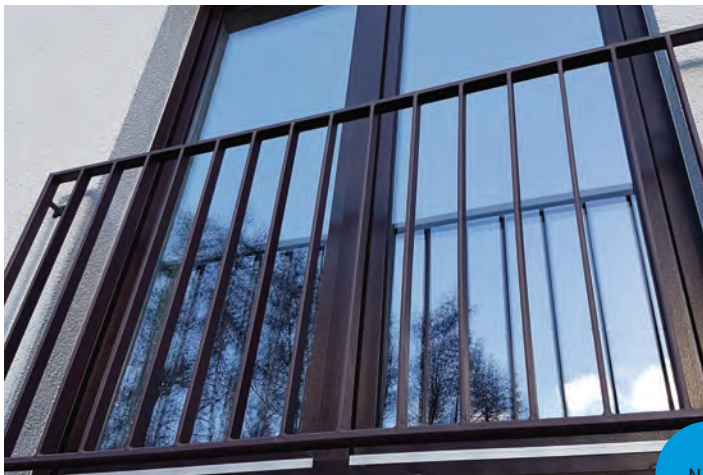
HARDWARE, COMPONENTS + SEALANTS



01



03



02

NEW

01

H.B. Fuller

H.B. Fuller's Ködispace 4SG warm-edge spacer system is a solution for both commercial and residential applications. The product's formulation chemically bonds to glass and silicone secondary sealant. There is no spacer migration, and it has a higher temperature stability than standard insulating glass with polyisobutylene, in addition to an increased resistance to incompatible glazing conditions, say officials. The product is currently the only reactive thermoplastic spacer system available, officials say. Booth #7093. 812/449-9567 | hbfuller.com

02

American RENOLIT Corp

RENOLIT will showcase its latest film offering EXOFOL FPX. FPX offers performance, competitive pricing and availability in the company's top colors, including three different blacks. Additionally, RENOLIT will offer laminate films including EXOFOL FX, with its 20-year warranty, in a broad selection of residential and commercial finishes; the company's full range of realistic interior woodgrains; and high-performance MLA film, suitable for lamination over wood products, that provides a clean, white, paintable finish on items like doorjambs, windows, trim and jamb extensions. Booth #5998. 616/581-2156 | Renolit.com

03

Linetec

Linetec's specialty woodgrain coatings for aluminum provide the benefits of metal with the biophilic beauty of natural wood. Choose from more than 50 woodgrain species and colors, along with textured grain patterns. Ensuring a durable surface that retains its color and gloss, Linetec's Class 2, 2+ and 2.5+ powder coating process meets or exceeds the AAMA 2604 specification. The finishes for aluminum mimic the aesthetic of real wood without swelling, rotting or warping. Booth #9013. 715/843-4100 | linetec.com

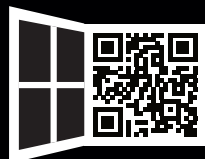


skai® Woodec meets skai® Mattex

Wood-aluminium look for trendsetters

Architects and builders love to see the combination of living wood and velvety, powdered aluminium. The trend combination for windows, doors and facades can be implemented easily and flexibly with the exterior finishes for building elements from skai®: skai® Mattex impresses with a realistic powder coating structure and is the absolute flattest matt finish ever. Equipped with proven cool colors technology and available in current trendy colors, it is the first choice for exterior films, even in extreme climates. skai® Woodec and skai® Mattex – the clever wood-solid color matt look.

Discover our surfaces on booth 6074 at GlassBuild America.



www.skai.com/exterior

HARDWARE, COMPONENTS + SEALANTS

01



NEW

01

Creative Millwork of Ohio Inc.

The new GridRunner allows customers to install their own window and door grilles, reducing installation steps, labor costs, number of components and job time. According to company officials, a standard grille installation is up to five times faster. Locking into place without pins or screws, the system comes with pre-installed hardware clips on all grilles. Booth #8064. 888/759-7121 | creativemillwork.com

02

Hans Building Material Technology Co.

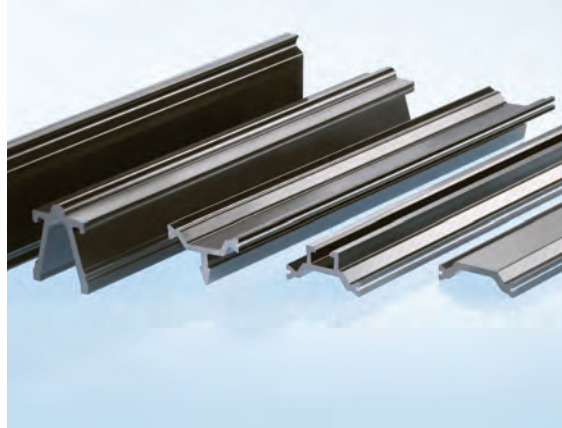
Blinds Between Glass from Hans is a renovation product which is widely used in doors and windows as an energy-efficient replacement for insulating glass. Compared with traditional insulating glass and window blinds, BBG products combine the glass and blinds as one, say officials, installing aluminum mini blinds inside a sealed IG unit. Two kinds of operating systems are available to control the blinds for windows or doors: manual or motorized. Booth #8123. 501/505-0810 | solarhans.com

NEW



02

03



03

Ensinger - insulbar North America

Ensinger - insulbar thermal break profiles are a vital component of modern window, door or façade systems made of metal. They eliminate thermal bridging between interior and exterior surfaces, improving overall performance of the system and reducing energy loss, according to company officials. The insulating profiles are available in many shapes, sizes and materials to meet even the most complex requirements. Booth #9087. 856/434-2947 | insulbar.com

04



04

Continental

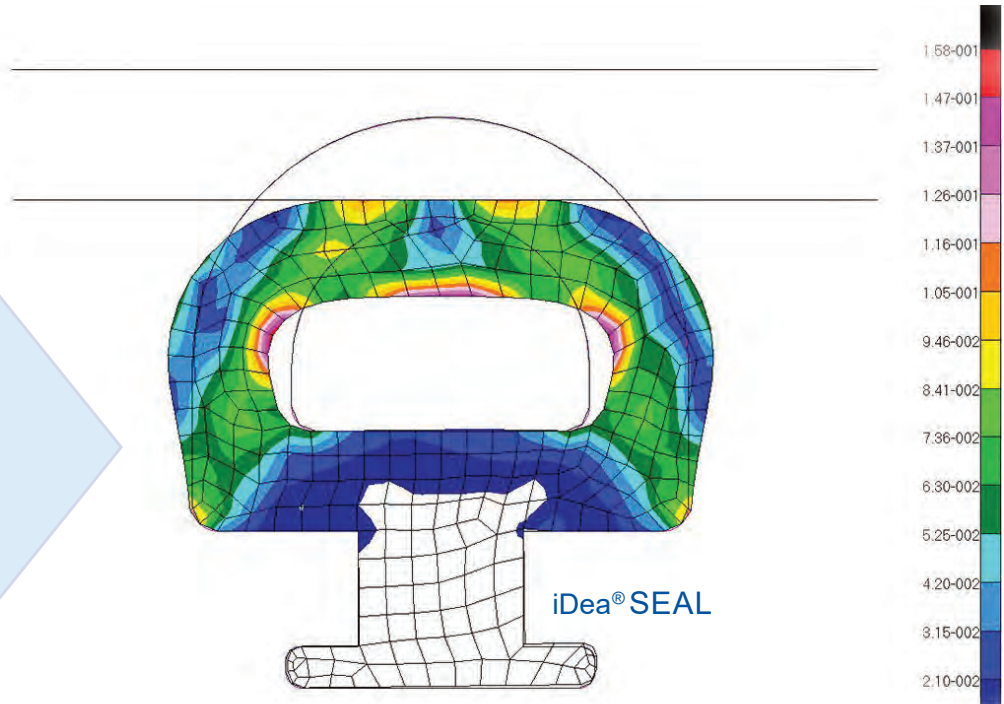
With skai Mattex, Continental presents a new exterior surfaces program that inspires the market with an extreme matte in laminated surfaces. It has a gloss level of two. This innovation replicates the look and feel of powder-coated aluminum with a particularly fine, yet concisely structured surface. Due to the extremely matte finish, the surface has a very high-quality appearance, an impression that is intensified when touched. The surface is particularly scratch-resistant due to its grain structure. Booth #6074. 540/550-4596 | skai.com

Creative Solutions with Proven Performance

A sealing partner, focused on creating a solution for your success.

Cooper Standard ISG uses **Finite Element Analysis (F.E.A.)** to simulate the effects of compression deflection on different material types with complex to simple geometry profiles.

It is beneficial to reduce development costs, save time and improves product performance.



Cooper Standard ISG custom designs seals and gaskets for commercial and residential building applications. Partner with our engineers for a custom seal that performs in demanding environments while satisfying architectural design specifications. Connect with us 330.339.3373

Product Features



www.cooperstandard-isg.com

For a FREE sample kit email: ISG-NorthAmerica@cooperstandard.com

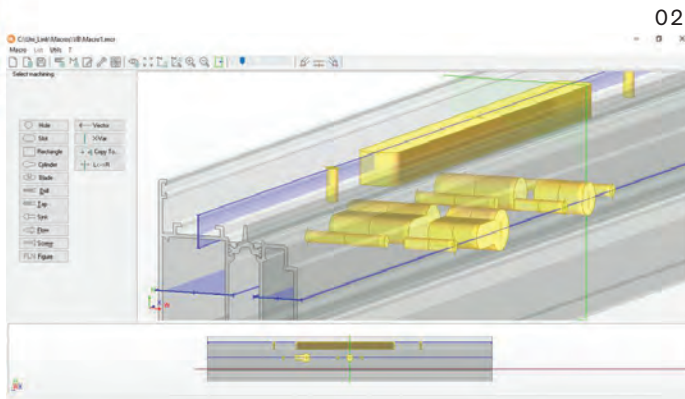
See us at GlassBuild America, booth 7098!

 **CooperStandard**
INDUSTRIAL AND SPECIALTY

[illegible]

FeneVision provides users with real-time operational control, insight and agility. Its dynamic bill of materials configurator enables rapid pricing, producing and delivering hundreds or thousands of unique units daily, complete on time, even if users work with seemingly infinite product variations, according to the company. It is said to connect everything and everyone, including customers' customers. And with ongoing user input, FeneTech continues improving it. Updates include: improved shipping routes with customer-specific filters; mobile-responsive redesign for FeneVision Web; revamped capacity completion logic; and additional flexibility in container tracking. Booth #6096.

330/954-7530 | fenetech.com



Unilink is an independent automation platform for production on CNC machines in the industry for aluminum, steel and PVC profiles used for doors and windows or any other profile industry. The platform includes a machine-independent, vector-based, 3D macro programming interface designed to be user-friendly, fast and capable of managing huge macro libraries. The Unilink platform can import data from any construction software and export to any brand CNC profile milling and cutting machine. Booth #9159.

312/917-6212 | unilinkautomation.com

847/220-5237 | a-w.com

NEW AT GLASSBUILD *(not pictured)*

IC COMPLEX

IC Commerce is an online store dedicated to products such as windows, doors, roller shutters, blinds, garage doors and other products for the fenestration industry. The online store software is fully integrated into the IC COMPLEX system, and products created with its configurators can be accessed directly in the store catalog. The system allows customers to search for predefined products and edit them using configurators. Buyers can search for products using categories and filters in the store or use a selected configurator to configure the product. Booth #9160.

312/340-0985 | iccomplex.eu

All for one, and one for all

Our window, door and glass software solutions are coming together as one at GlassBuild 2022.

Visit our affiliated brands at the following booths to learn more.



Booth 6096

Window and door manufacturers and glass fabricators worldwide use FeneVision ERP software to manage, view and analyze all areas of their operations.

fenetech.com



Booth 6040

Soft Tech provides premium software solutions for the window and door industry to speed up your design process, quoting and manufacturing.

softtech.com



Booth 9104

contractERP is the most comprehensive industry-tailored business management platform available to the division 8, fenestration and construction supply industries.

contracterp.com

01



NEW

03



02



04

01

Orgadata USA Inc.

Orgadata is introducing Datasafe, a product QR code for companies that produce windows, doors and façades using Orgadata's LogiKal system. With Datasafe, every window, door and façade system can feature a product QR code that provides easy access to all information on the product. Datasafe allows users to quickly access everything about the product, including size, glass, profile, color and more, giving limitless advantages and information instantly. Booth #9150. 303/205-6394 | orgadata.us

02

Keystone Certifications

NFRC temporary labels list energy performance ratings to demonstrate building code and energy incentive program conformance to building officials and other end-users. The integrated map portion illustrates the ENERGY STAR Certified climate zones and includes the mandatory Air Leakage rating. These labels employ a low-tack adhesive and are typically affixed to an interior glazing surface to be removed upon completion of the building inspection. Booth #6223. 717/932-8500 | keystonecerts.com

03

Magid

Magid's new PPE innovations for glass handling are changing the game to offer the highest levels of protection with unmatched comfort and range of motion, say company officials. The M-GARD breathable garments are up to 30 percent lighter than competitive products and deliver critical ANSI Cut Level A7-A9 protection at a great value, according to the company. The garments feature AeroDex Technology and integrate new fibers and yarn wrapping techniques to create lighter-weight garments that won't trap heat. Booth #7087. 708/629-5919 | magidglove.com

NEW



05

04

EDTM Inc.

EDTM Inc. The Glass-Chek Elite identifies laminated glass in a window and measures the thickness of the laminate inner-layer. The graphical display illustrates the window's profile. The instrument also detects the presence and location of low-emissivity coatings, and can tell if the coating is a hard or soft coat, as well as the number of silver layers used to make the coating.

419/861-1030 | edtm.com

05

Glazelock Inc.

Glazelock Shims Inc. has been a manufacturer of structural plastic shims since 1997. The company was invented by a window installer and aims to develop shims that reduce material and labor costs, while being secure and stable. During the show, the company will promote its pre-scored shims that are said to be easier to break off than traditional wood shims. The shims eliminate the need to cut or to score and are an inexpensive option for companies, according to the company. Booth #9044. 815/935-5396 | glazelockshims.com



A+W iQuote

Take the next step in e-commerce software.

- Simplify configuring quotes
- Easily place orders
- Improve status communication
- Enable customers to buy



01



01

Smith Case

Smith Case has carrying case solutions to showcase products and components. The cases include precision-cut foam inserts to present demonstration tools in an effective yet protective manner. Cases can be designed to hold a range of items for glass industry companies, including heat lamps, insulating glass units, infrared temperature guns, solar power meters, radiometer bulbs, UV lamps and cards, miscellaneous containers, table pads and more. Booth #8104.

336/774-7974 | smithcase.com



02

02

Tuff-N-Lite

The Keel Zippered Jacket from Tuff-N-Lite offers an ASTM-1790 cut level 4. The jacket offers easy access with a full front nonmetallic, scratch-resistant zipper, while providing the comfort and breathability of casual clothing, according to the company. The jacket features orange sleeves for maximum visibility, and a ribbed collar for excellent neck protection. The breathable fabric stretches in any direction for comfort and a full range of motion, while offering superior resistance to lacerations and abrasions. Added wrist guards for extra security. Booth #8200.

828/322-6975 | tuffnlite.com

03

F. Barkow Inc.

Barkow's Model P212-A on a 2023 Isuzu NPR glass carrier has a 12-foot-long by 105-inch-high aluminum, fully welded glazing body. Ten Stake-Loc self-locking stakes are included in the cantilevered metal carrier, with removable bars in center and rear of body. There are B load holding slats throughout. Manufactured by craftsmen. The carrier has a 2023 Isuzu NPR chassis cab, 14,500 gross vehicle weight rating, a 6.6-liter gas engine, six-speed automatic transmission, and power windows and locks. Booth #8098.

800/558-5580 | barkow.com

04

SmartLift US Inc.

Smartlift's uniquely designed glass lifters allow users to mount windows of any size with ease. The lifters were designed with high-quality materials so that they will last, say officials. Smartlift also offers a variety of accessories, such as suction cups and extension bars, to make the worker's glass lifting job even easier. Booth #7016.

646/877-6455 | smartlift.com



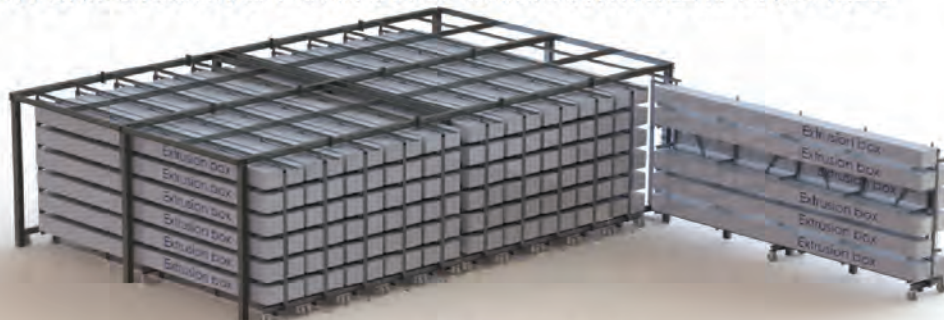


03



04

DRAWERS SYSTEMS FOR P.V.C. OR ALUMINIUM PROFILES



EASY INVENTORY SOLUTIONS

- SELF STANDING SOLID STEEL CONSTRUCTION / NO DRILLING OR WELDING ON INSTALLATION
- FULL SIZE DRAWERS WITH LEDGEBOARD CUSTOM TO SIZE AND QUANTITY AS NEEDED
- 6,000LBS CAPACITY PER DAWER
- OPTION OF LADDER AND RAILING FOR ADDITIONAL STORAGE AND ACCES TO MEZZANINE
- CONSTRUCTION ACCORDING CSA W59 W47.1



WWW.BROMERINC.COM

INFO@BROMERINC.COM

450-477-6682

See us at GlassBuild America, booth 4232.

EXHIBITOR LIST

Organized by the National Glass Association and supported by the Fenestration and Glazing Industry Alliance, GlassBuild will host nearly 400 exhibiting companies in Las Vegas, with more than 70 new suppliers added to the 2022 event. See these first-time

exhibitors highlighted in the exhibitor list.

Also new this year, the World Millwork Alliance will co-locate with GlassBuild. "WMA members, exhibitors and attendees intersect with the foundational residential fenestration businesses represented at

GlassBuild America," explains Nicole Harris, NGA president & CEO. WMA exhibits offer GlassBuild attendees access to even more companies doing business in the adjacent millwork industry. See the WMA exhibitor list starting on page 76.

EXHIBITING AS	BOOTH
A+W Software	6136
Access Hardware Supply	9118
AccessIT	9104
Accurate Lock and Hardware	8172
ADDEV Materials	9068
Adelio Lattuada - Lattuada North America	5104
Adhesives Research, Inc.	10098
ADI SRL / IGP INC.	6186
Advanced Screen Systems Inc.	2049
Akarmak	2046
Akotherm Aluminium-Profilssysteme	8124
ALLOY FASTENERS, INC.	9132
AllYourHardware.com	9046
ALUCORP	8017
Alumax Bath Enclosures	7200
Aluro	4064
American Architectural Coatings	9124
American Glass Machinery	2095
Ameri-Can Machinery	5266
American RENOLIT Corp	5998
AmesburyTruth	8029
AMJ Houses LLC	8132
Anthony Innovations (NA), LLC.	10078
Apex Construction Supplies	9009
Arcadia Inc.	9004
Argon Filling Systems, Inc.	8154
Ariño Duglass	10104
Arizona Shower Door, Inc.	9136
Arkema, Inc.	8069
Asas Aluminium AS	10124
Ascentium Capital	2089
ASSA ABLOY Opening Solutions	7124

EXHIBITING AS	BOOTH
ATAS INTERNATIONAL, INC.	9085
ATech Machine, Inc	5280
AutoMAK Assembly Inc.	3118
Bailey Specialty Cranes & Aerials	2040
BARBERÁN, S.A.	1051
Bavelloni America, Inc.	2232
Beijing Hanjiang Automatic Glass Machine Equipment Co., Ltd.	2091
Beijing Lead-Top International Fair Co., Ltd	8020
Beijing Northtech Glass Co., Ltd.	8024
BENTELER Maschinenbau GmbH	6270
BidClips	8107
Billco MFG., Inc.	5064
Blink Blinds + Glass	7165
Blusafe Solutions	7218
Bondtech Corp.	2033
Bottero S.p.A.	6174
Bovone North America	5208
British Pavilion including CiiLock and	9022
Bromer, Inc.	4232
Burkle North America, Inc.	6244
BVC Group, Inc (Better Vacuum Cups, Inc)	3069
C2A Longterm Inc.	8127
CAD-PLAN GmbH	9153
Caldwell Manufacturing	6046
CARDINAL PAINT AND POWDER	4070
Casso-Solar Technologies, LLC.	6232
Chelsea Building Products, Inc.	7040
ClearShield Technologies	7049
Cline Aluminum Doors, Inc.	8119
CMS North America	5040
Colour Alliance INC.	9105

EXHIBITING AS	BOOTH
CompanyCam	8106
Continental	6074
Continental Group Glass Sales	8068
CoolTemper USA	7208
Cooper Standard ISG	7098
Coroplast Tape Corporation	8041
Creative Millwork of Ohio, Inc.	8064
Crimsafe North America	8197
CRL	6152
Custom Glass Products	6282
Datum Automation	4245
Decco Extrusion	8118
Deceuninck North America	8004
DEFINE OVERSEAS PVT. LTD.	9158
DeGorter, Inc.	5176
Deltamax Automazione	7178
Deltarack USA & Leading Edge	6214
DeMichele Group	5254
Diamant SAS	3183
Diamon-Fusion International	5232
DIDION AUTOCLAVE	5238
Door & Window Market [DWM] Magazine	2115
Door Controls USA	6238
dormakaba USA, Inc.	10064
Dow	7173
Dreamwalls Innovative Glass Products	9093
Dri-Design, Inc.	9017
Eastman Machine Company	6276
EDDA PACK	2119
EDTM, Inc.	4134
Elliott Manufacturing	7197



World Leader in Glass Technology & Window Sales Kits for Over 25 Years!



Glass-Chek ELITE
Detect Low-E Type
& Location



Window Energy Profiler
Measure Window Performance



BTU / Solar Meter
Powerful In-Home
Sales Tool



**Come Visit
Us At GBA &
Get A Hands-
On Demo in
Booth # 4134**

**Keep
Watching:
Updated Product
Announcements
Coming at
GBA 2022!**



**Custom and Standard
Window Sales Kit Options**

**Solutions that Grow & Move
Your Business Forward!
Learn More at www.edtm.com**

Manufactured in the USA



EXHIBITOR LIST

EXHIBITING AS	BOOTH	EXHIBITING AS	BOOTH	EXHIBITING AS	BOOTH
Elumatec North America, Inc.	5110	Filtraglass	2116	Glassopolis	7132
Emmegi USA, Inc.	5086	Flexijet North America	4080	Glass-Technology International	7203
EnduroShield	5246	FOM USA	5002	GlassTrax & Glaziers Online	8067
Ensinger - insulbar North America	9087	Forel S.p.A. / Forel North America	3064	Glaston America	6112
Erd Metal	8128	FORNAX DOOR AND WINDOW ACCESSORIES	7125	GlasWeld Scratch Removal	8047
Erdman Automation Corp.	5194	Friedman Corporation	6136	Glazelock Inc.	9044
Ergo Robotic Solutions	6054	FUX Maschinenbau und Kunststofftechnik GmbH	6074	Global Security Glazing	8208
eSUB Construction Software	9070	GDS Estimating	9071	Goldstar Co., Ltd.	7025
ESWINDOWS	8158	GED Integrated Solutions, Inc. & Norfield	2010	Gonzato Group CA Inc.	9120
EZ Scaffold	1047	Genius Retractable Screens	8077	GRABO/ Nemo Power Tools	9023
F. Barkow, Inc.	8098	GGI	6124	GRAF Industries Inc	2020
FAPIM S.p.A. Hardware Mfg.	7191	Glass Coatings and Concepts	6077	Grove Shims	9076
FARAONE	4188	Glass Company	7184	Groves Incorporated	4026
Faulkner Fabricating, Inc.	9016	Glass Machinery Direct	3054	Guardian Glass	6194
Fenestration Canada	10194	Glass Magazine	1172	Guizhou Golden Ocean Trading Co., Ltd.	7021
FeneTech--A 2020 Company	6096	Glass Vice	10100	Gulf Rubber Industries, LLC.	8165
Fenzi-North America	2088	Glasslam	7196	Gunther Mirror Mastics	8180
Ferro Dip-Tech	2100	Glassline Corp	3081	Gutmann North America	9072
FGIA - Fenestration and Glazing Industry Alliance	1172	GlassManager	9165	Gutmann Orama	9072
FHC Frameless Hardware Company	6016			H.B. Fuller	7093



Lamination solutions in virtually any shape or color you can imagine



**North American
Specialty Laminations™**

Call us at 715-597-6525
or online at
northamericanlam.com



EXHIBITING AS	BOOTH
Haffner Machinery	5158
HANS Building Material Technology Co. Ltd.	8123
Hardware and Glass Group Limited	9188
Hardware Everywhere	7067
HEGLA Corporation	6007
HERCULES BROS TRADING FZE	9005
Hilti, Inc	8173
Horizon SRLS	3185
HP3 Software, Inc.	8112
Hub Industrial an Applied MSS Co.	2056
HydAway Hydraulic Walls	6250
Hydro Extrusions North America	8075
Hygrade Components	7130
IC COMPLEX	9160
ICD High Performance Coatings + Chemistries	6222
Ideal Glass Hardware	8129
IGE Glass Technologies	5218
IGK North America	9194
Industry Pavilion	1172

EXHIBITING AS	BOOTH
Infinite Recycled Technologies	8196
Infor CPQ	9055
iNOEX, LLC	9091
Integrated Automation Systems	4152
Interglass	6258
Interlayer Solutions Inc.	6264
Interlock USA	6104
Intermac America	3124
International Union of Painters and Allied Trades	6219
Intertek	9029
Italcarrrelli SpA	7174
Italian Trade Agency	6180
JEI Structural Engineering Calculations & Design Assist	9117
Jekko USA	3104
Jinan Wondec Machinery Co., Ltd	7023
JLM Wholesale	8005
Joe's Refrigeration, Inc. / Clean Room Solutions	3028
Jordahl USA Inc.	7205

EXHIBITING AS	BOOTH
Jordon Glass Machinery	2116
Joseph Machine Co	2244
Jura Films North America, LLC.	7078
KENWA Trading Corp.	9042
KERAGLASS INDUSTRIES SRL	5098
Keystone Certifications	6223
Kich Architectural Product Pvt Ltd.	9074
Kleiberit Adhesives USA, Inc.	2053
KLEIN USA	8108
KMR Research	2117
La Tecnica Nel Vetro	5182
LaPel Solutions	2101
Larson Engineering, Inc.	9053
Lawrence Industries	9018
Linetec	9013
Linkan North America, LLC	9164
Lisec America, Inc.	5018
LiteSentry - Softsolution	7104
Longhorn Architectural Products, LLC	7133

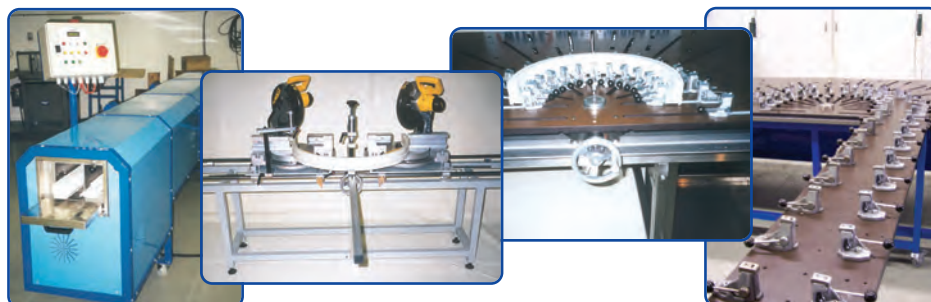
**MACHINERY FOR BENDING
VINYL PROFILES**

**Tel.: (905) 678-2397
sales@witte-na.com
www.witte-na.com**

WITTE

**WITTE NORTH
AMERICA LTD.**

**VISIT US AT
GLASSBUILD
AMERICA
BOOTH #8011**



EXHIBITOR LIST

EXHIBITING AS	BOOTH	EXHIBITING AS	BOOTH	EXHIBITING AS	BOOTH
LTC USA LLC.	7065	PH Tech, Inc.	9112	Siteline	9166
M3 Glass Technologies	8164	PMC Software	6136	SKILL GLASS	6184
Machines and Wheels, Inc.	3224	Podium	8168	Sky Building Products	9099
Macotec S.r.l.	4182	Polaris Soft Close Hinge	8212	Skyreach Equipment	2099
MAGID	7087	Poly Extrusions Inc	9130	SMART Logistics	7206
Mainstreet Computers LLC	7070	Polytronix, Inc.	9043	Smart-Builder Glass Software	8152
Mapes Panels	7069	Preference North America, Inc.	10198	Smart-Film-Blinds	7220
MAPPI AMERICA INC	5186	PRL Glass	9108	SmartGroup America	2097
Marine Fasteners	7212	PRL Glass	9109	Smartlift US, Inc.	7016
Matodi USA	5124	Process Label Systems, Inc.	9168	Smith Case	8104
Maxest Industrial Inc / McThermo LLC	9113	Prodim USA	3088	Soft Tech Group	6040
Mazzaroppi Engineering S.r.l.	6172	Profile Wrapping- Diversified Mfg of CA, DMOC Inc.	8204	Southern Stretch Forming	3056
Mbs Standoffs	9031	Q-railing - North America	7046	SPH GLOBAL/ Protectapeel	8080
McKeegan Equipment	9012	Quan Dat Aluminium Facade in Vietnam Since 1991	7199	Spider by BrandSafway	10046
Mecal USA, Inc.	5076	Quanex	7026	SPIL Software	8048
Millet Glass Industry	8038	Quattrolifts USA, Ltd.	5028	SPYDERCRANE	2209
Mole Moreschi S.r.l.	4190	Quick Fabrication	4249	Stainless Structurals America	8081
Monticelli s.r.l.	8190	RA Workshop Software	8009	Stretch Solutions	8046
Morse Architectural	9201	RACO Interior Products	9184	Strybuc Industries	9038
MyGlassClass.com	1172	Radisson Industries	7179	Stylex Windows & Doors	9035
MyGlassTruck	6130	Reed Rubber Products	7209	Sullivan Hardware	8184
National Glass Association (NGA)	1172	Reliable Products	9080	Sun 3D Corporation	3050
NORDWALL	4184	Rider Glass Co. Ltd.	8016	Sun Design Hardware Factory Ltd.	7017
North American Contractor Certification (NACC)	6207	Riot Glass, LLC	6221	Sunbelt Business Advisors	9021
Novagard	7076	RiteScreen	6079	Suqian Spring Glass Ltd.	8022
NuCoat North America, LLC	8074	Rockwell Security, Inc.	7045	Surface Armor	9107
Oceanside Glass & Tile	8193	SAF	6071	SWM International	8044
Oemme S.p.A.	3112	SAFTI FIRST Fire Rated Glazing Solutions	8065	SynergX Technologies, Inc.	3067
Omni Cubed, Inc.	4068	Salem Fabrication Supplies and HHH Equipment Resources	5050	Tanner	8179
Omni Glass SCT	10108	Satinal USA, Inc.	6118	TBP Converting	8080
Optima S.r.l.	6178	SBMS Group Inc.	8192	Techno Rubber Industries	8105
Orchard Lock Distributors, LLC.	9064	Schiatti Angelo S.r.l.	5176	Techno-UMG America	9037
Orgadata USA / LogiKal	9150	Schiavo Glass Machinery SGM S.r.l.	7172	Tenon Beijing Equipment - TSS Sales & Service	3209
OZONE Overseas PVT Ltd.	9073	Schilling Inc.	7222	Top Notch Distribution	9041
Palmer Products Corporation	9154	Schlegel PolyFab	8051	Tower Sealants	10200
Panda Windows & Doors	10130	Scotchman Industries	2112	Tremco Construction Products Group	6200
Paradigm	2029	Screenco Manufacturing, Ltd.	7185	TRex	8019
Paramount Extrusions Company	8130	Security Door Controls	8045	TRIULZI CESARE SPECIAL EQUIPMENTS SRL	5172
Pat Mooney Saws	3040	SEVASA	8070	Trucent	3065
PDS IG Equipment, LLC	2035	Shoham Machinery Ltd	3098	TRUE Contractor Software	8071
Perfect Score Technologies	3032	Sika Corporation	8186	TSUBAKI - KABELSCHLEPP	3075
Pertici North America	4218	SilGuard by Inverge	8131	Tuff-N-Lite	8200

EXHIBITING AS	BOOTH
Turkish Glass	6164
U.S. Bullet Proofing	7216
UAP Limited	9024
UCS - WINDOW AUTOMATION	4172
UFP Industrial	6209
Ultrafab, Inc.	7112
Unelko Corp- Invisible Shield	8159
Uni_Link Software & Automation USA LLC	9159
Unikoo Glass & Hardware	8176
Unruh Fab Inc.	8054
US Centrifuge	3092
USGlass Magazine	2113
VEKA North America	6084
Vesuvius	7129
Vicone High Performance Rubber Inc.	9121
Vip Rubber Company	8174
Viprotron North America Inc.	5242
Vision Hardware, Inc.	6206
Vitro Architectural Glass	6064
VITRUM	7180
Wagner	7080
Wakefield Equipment	3150
WALCO® (Powered by Novacel)	2052
Walker Glass Company Ltd	9054
Walter A Wood Supply Co.	9007
Water Treatment Solutions	4239
Weldco Sales, Inc.	2026
Welland Hardware Manufacturing Co, Ltd.	8020
Wesco Anixter	8167
Window + Door	1172
Windowmaker Software	9157
WINLET	7136
Winpro	4032
Winsys	6136
WINtek by The Georgian Bar Company Ltd	8023
Witte North America	8011
Wood's Powr-Grip Co., Inc.	7064
Wrisco Industries Inc.	9050
Xinglass America	4074
YourRadar	7201
Yuntong Glass USA	3218
Zone Import, Inc.	8201

SAVEOMAT Gravimetric Systems

The next dimension of gravimetric mass throughput control

The **SAVEOMAT** product line - gravimetric systems for the perfect conveyance of raw material.

- Reliable dosing and reduced material consumption
- Improved process stability, quality and profitability
- Highly accurate dosing of up to 7 components



The dosing of solid, liquid, powder or multiple components: iNOEX GmbH offers a tailor-made solution for each application.



Scan me!

promex Measurement Systems

High precision profile measurement for use in production

The **promex Profile Measurement** product line provides fast, easy, and accurate solutions for extruded profiles.

- 100% Profile Measurement
Cycle Time 3-5 seconds
- Virtual Alignment and Gauges
- GD&T Measurement Capable
- Data collection of all measurement results for historical analysis
- PVC Extrusion Tool Plate Measurement
- Capstock thickness measurement for window profiles



iNOEX LLC is the exclusive ASCONA partner for the promex product ranges in North America (USA, Canada, and Mexico).



Scan me!

iNOEX LLC
1913 Olde Homestead Lane
Lancaster, PA 17601
www.inoex.com

iNOEX
INSPIRE BEYOND MEASUREMENT

See us at GlassBuild America, booth 9091.

EXHIBITOR LIST

WORLD MILLWORK ALLIANCE EXHIBITORS

EXHIBITING AS	BOOTH
A&F Wood, Inc.	2282
Adami S/A Maderias	2313
AFCO Industries, Inc.	3307
Aglomerados Cotopaxi SA	2274
Alexandria Moulding, Inc.	4294
American Stairways, Inc.	3310
Arauco Wood Products	6306
BrasPine Madeiras Ltda	2294
Bright Wood Corporation	3290
Carolina Stair Supply	2283
Cascade Wood Products	5306
CertainTeed, LLC	3316
CMPC	4319
Composite Technology International	3311
Crown Heritage/East Coast Mouldins	3319
Demountable Concepts	3313
DMSi Software	2291
Doorframer	3308

EXHIBITING AS	BOOTH
EFS Furniture	2317
EGGER Wood Products	2321
Endura Products, Inc.	6300
Evermark LLC	2288
Expama Exportadora Paragominas De Madeiras LTDA	3280
Famossul Madeiras S.A.	3278
Faqueadas Ipumirim S/A	5314
Fitts / Stair Components	4307
Frameport Doors	4311
FrontLine Bldg. Products Inc.	4295
Full House Machinery	2289
Genesis Architectural Products	2277
GlassCraft Door Co.	4289
G-M Wood Products, Inc.	3295
GPI Millworks/Global Products International Group, LLC	2312
Hampton Lumber	3314
H-I-S Paint Manufacturing	2281

EXHIBITING AS	BOOTH
House of Forgings	2301
Jeld-Wen, Inc.	3282
Kval, Inc.	3301
L.J. Smith Stair Systems	4314
Lynden Door, Inc.	4300
Masisa S.A.	2278
Masonite	2295
Menzner Hardwoods	3289
Millpar	4306
MJB Wood Group, Inc.	2309
Moldecor	2284
Nova Plastech, LLC	3318
ODL, Inc.	6294
Paradigm, LLC	2311
Pennsylvania Lumbermens Mutual Ins. Co.	3306
Plastpro, Inc.	2306
Ponderosa Software	5302
Produits Matra, Inc.	2276
PTG Logistics	2319
R.S.L., Inc.	4288
Rohden Doors Corp.	6318
RUVO/Merrick Machine	2285
Sierra Pacific Industries	4317
Simms Machinery, Inc.	5310
Simpson Door Co	5290
SnapDragon Associates, LLC	2280
Steves and Sons, Inc.	6288
Superfici America	2279
The Marwin Company, Inc.	4312
The Penrod Company	2300
Therma-Tru	4321
TLC Mouldings	4315
Tru Tech Doors	2318
VantagePoint Industries LLC	3315
Westlake Royal Building Products	6312
Weston Wood Solutions Inc.	4310
William-MacRae and Co.	2315
Woodgrain Millwork	5318
WoodWare Systems	3302
Worldwide Door Components, Inc.	2307
Young Manufacturing Co Inc.	4301

449 DODGE STREET, KENT, OHIO WWW.KENTAUTOMATION.COM • SALES@MNMIND.COM TELEPHONE: (330) 678-6343

OVER 5000 INSTALLATIONS

NOTCH BOXES • LENGTH GAUGES • END MILLS • SAWING CENTERS •
ROUTING CENTERS • DRILLING CENTERS • SERVO PUL PULTRUDERS



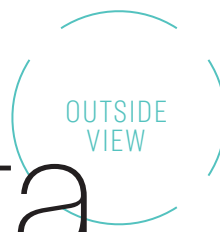
KENT
AUTOMATION
DESIGN CUSTOMIZATION

A DIVISION OF  MNM MFG INC

Advertiser Index

Advertiser	Page	Phone	Website or email address
A+W Software	67		a-w.com
AllView	11	323/717-4072	email: jdobel@uspolymerinc.com
AmesburyTruth	55		amesburytruth.com
Anthony Innovations	80		email: salesna@anthonygroup.net
Blink Blinds + Glass	39		blinkblinds.com
Bromer Inc.	69	450/477-6682	bromerinc.com
Caldwell Manufacturing Co.	16	888/347-7771	caldwellmfgco.com
Chelsea Building Products	41	412/826-8077	chelseabuildingproducts.com
Continental	61		skai.com/exterior
CooperStandard ISG	63		cooperstandard-isg.com
Creative Millwork	43	60/762-0002	creativemillwork.com
EDTM Inc.	71	419/861-1030	edtm.com
Eko Okna	13		ekookna.us
Erdman Automation	37	763/389-9475	erdmanautomation.com
Fehr Warehouse Solutions Inc.	23	704/666-8448	fehr-usa.com
FeneTech Inc.	65	330/995-2830	fenetech.com
FenSeal	15	610/403-9838	fenseal.com
Ferco Architectural Hardware	19	800/927-1097	email: ferco@ferco.ca
Frontline Building Products	14	800/223-4792	frontlinebldg.com
GED Integrated Solutions	49	330/963-5401	gedusa.com
HAECO	17	800/352-3522	haeco.us
iNOEX	75		inoex.com
Integrated Automation Systems	20	330/954-3070	email: ryan@iasmachnery.com
Joseph Machine Company	53	717/432-3442	email: sales@josephmachine.com
Kent Automation	76	330/678-6343	kentautomation.com
Lawrence Industries	7		lawrenceindustriesinc.com
Lisec America	51		lisec.com
MAGID	30-31	800/203-9540	magidglove.com/windowanddoor
Merit Aluminum Products	9	951/735-1770	meritaluminumproducts.com
MFM Building Products	25	800/882-7663	mfmmbp.com
North American Specialty Laminations	72	715/597-6525	northamericanlam.com
Novacel	21		novacel-protective.com
Novagard Inc.	27		novagard.com/qwiksetdemo
P.H. Tech	45	800/463-4392	email: marketing@phtech.ca
Quanex Building Products	1,79		quanex.com
Roto North America	3	800/243-0893	rotonorthamerica.com
Stürtz Machinery	2	330/405-0444	sturtz.com
Ultrafab Inc.	57	585/924-2186	ultrafab.com
Vantage Point Industries	5	909/786-0629	vantagepointindustries.com
Vision Hardware	59	800/220-4756	visionhardware.com
Wakefield Equipment	24	440/899-5658	wakefeldequipment.com
Witte North America	73	905/678-2397	email: sales@witte-na.com

Market Data



STAY CONNECTED // Follow
@windowdoormag on
Twitter for industry updates

Remodeling Gains to Slide Lower through Mid-Year 2023 // Expenditures Still Set to Expand

Annual growth in homeowner spending for improvements and repairs is expected to soften during the first half of next year, according to the Leading Indicator of Remodeling Activity (LIRA) released in July by the Remodeling Futures Program at the Joint Center for Housing Studies of Harvard University. The LIRA projects year-over-year gains in remodeling expenditures to owner-occupied homes will decelerate from 17.4 percent in 2022 to 10.1 percent by the second quarter of 2023. "While beginning to soften, growth in spending for home improvements and repairs is expected to remain well above the market's historical average of 5 percent," says Abbe Will, associate project director of the Remodeling Futures Program. "In the first half of 2023, annual remodeling expenditures are still set to expand to nearly \$450 billion."

Overall Housing Starts

9.6%



percent decline in July, the lowest reading for single-family home building since June 2020. Source: U.S. Department of Housing and Urban Development and the U.S. Census Bureau

Builder Confidence

49



is the lowest builder confidence reading, marking the first time since May 2020 that the index fell below the key break-even measure of 50. Source: National Association of Home Builders/Wells Fargo Housing Market Index, August

New Single-Family Home Sales

12.6%

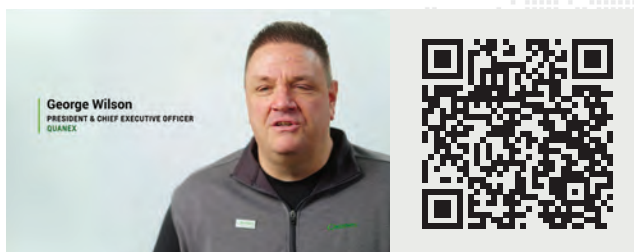


decrease to a 511,000 seasonally adjusted annual rate. Source: U.S. Department of Housing and Urban Development and the U.S. Census Bureau

► Stock prices of publicly traded window and door companies underperformed the broader market in August, as the W&D Stock Index decreased 5.3 percent compared to a 4.0 percent decrease for the S&P 500. These losses pulled in the 12-month return on the W&D Index to negative 11.8 percent compared to a 12.6 percent decrease for the S&P 500. Building products stocks and the broader market continue to be negatively impacted by the tighter Fed policy and recessionary headlines in the media/news cycle. Homebuilder sentiment fell for the eighth straight month as elevated interest rates, ongoing supply chain problems and high home prices continue to exacerbate housing affordability challenges. However, building products companies continue to generate strong near-term financial performance and see growth in repair and remodel activity from the lock-in mortgage rate effect while new construction start/permit activity moderates. Source: Lincoln Financial

A Part of Something Bigger™

FOR NEARLY A CENTURY, QUANEX HAS FUELED THE BELIEF THAT INNOVATION AND THE RIGHT PEOPLE CAN **TRANSFORM THE WORLD** – ONE SOLUTION AT A TIME. THROUGH OUR PIONEERING, SUSTAINABLY-DRIVEN PRODUCT SOLUTIONS, WE'RE STRIVING TO **BUILD A BRIGHTER FUTURE** FOR OUR CUSTOMERS ACROSS THE GLOBE. WE ARE YOUR ONE SOURCE FOR QUALITY BUILDING COMPONENTS. GLOBALLY TRUSTED AND DRIVEN BY INNOVATION – TOGETHER WE CAN **BUILD SMARTER** PRODUCTS. WE ARE RELIABLE, LEADERS, PIONEERS, INNOVATORS, WORLD-WIDE SOLUTION MAKERS. WE COMBINE AESTHETICS AND PERFORMANCE TO **DELIVER LASTING VALUE** FOR YOUR BUSINESS AND YOUR CUSTOMERS. WE ARE NOT JUST ANOTHER MANUFACTURING COMPANY, **WE ARE A PART OF SOMETHING BIGGER.**



Scan the code to watch the video, and learn more about how Quanex can help solve your business challenges today and into tomorrow.

See us at GlassBuild America, booth 7026.

Learn more at QUANEX.COM

Quanex

9000 Series

Even the biggest
panels can't resist

Ideal for panels
up to 800lbs



Precision bearings
reduce rolling resistance

Single bogie
ensures smooth
operation



Pressed metal
retains structural
integrity

Ideal for heavy architectural panels

All Anthony Innovations products are

- Tested to 10,000 cycles
- AAMA 906 certified for durability
- Made with sealed precision bearings for reduced operational force
- Available in CNC machined **stainless steel**, **plated steel** or **polymer** tyre options
- Spacers and mounting tabs are available upon request

See us at GlassBuild America,
booth 10078.



**ANTHONY
INNOVATIONS**

Moving Doors And Windows Forward



For the full product range, visit anthonyinnovations.com
or contact us on salesna@anthonygroup.net
Scan the QR code to learn more about our rollers